



Datasheet for ABIN5667845  
**anti-WNT1 antibody (AA 270-370) (PerCP)**



[Go to Product page](#)

2 Images

Overview

|                      |   |
|----------------------|---|
| Quantity:            | 100 µg  |
| Target:              | WNT1  |
| Binding Specificity: | AA 270-370  |
| Reactivity:          | Human   |
| Host:                | Rabbit  |
| Clonality:           | Polyclonal  |
| Conjugate:           | This WNT1 antibody is conjugated to PerCP         |
| Application:         | Western Blotting (WB), Immunohistochemistry (IHC) |

Product Details

|               |   |
|---------------|---|
| Immunogen:    | Synthetic peptide from the C-terminal of Human Wnt1 (aa. 270-370)                     |
| Specificity:  | Detects 46 kDa. Band is detected at ~46 kDa, due to post translational modifications. |
| Purification: | Peptide Affinity Purified   |

Target Details

|                   |  |
|-------------------|--|
| Target:           | WNT1                                   |
| Alternative Name: | Wnt1 ( <a href="#">WNT1 Products</a> ) |
| Gene ID:          | 7471                                   |
| NCBI Accession:   | <a href="#">NP_005421</a>              |
| UniProt:          | <a href="#">P04628</a>                 |

## Target Details

Pathways: [WNT Signaling](#), [Dopaminergic Neurogenesis](#)

## Application Details

Application Notes:

- WB (1:1000)
- IHC (1:50)
- optimal dilutions for assays should be determined by the user.

Comment: A 1:1000 dilution of ABIN5667845 was sufficient for detection of Wnt1 in 10 µg of human 293T cell lysates by ECL immunoblot analysis using goat anti-rabbit IgG:HRP as the secondary antibody.

Restrictions: For Research Use only

## Handling

Format: Liquid

Concentration: 1 mg/mL

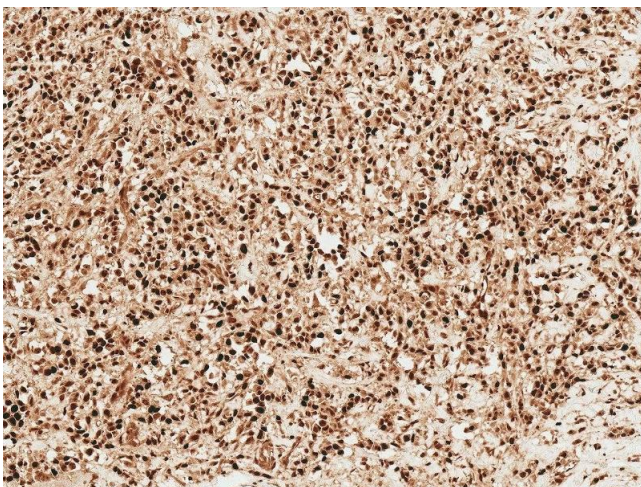
Buffer: PBS pH 7.4, 50 % glycerol, 0.09 % Sodium Azide

Preservative: Sodium azide

Precaution of Use: This product contains Sodium azide: a POISONOUS AND HAZARDOUS SUBSTANCE, which should be handled by trained staff only.

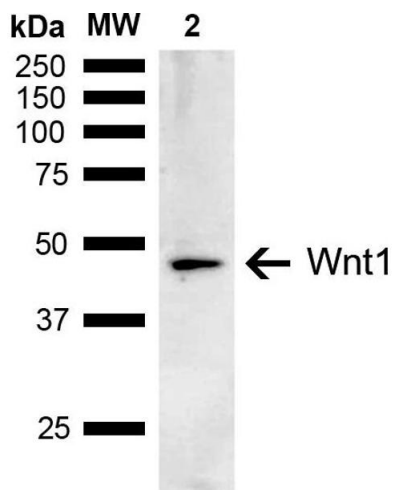
Storage: -20 °C

## Images



### Immunohistochemistry

**Image 1.** Immunohistochemistry analysis using Rabbit Anti-Wnt1 Polyclonal Antibody (ABIN5667845). Tissue: Breast Cancer. Species: Human. Fixation: Formalin Fixed Paraffin-Embedded. Primary Antibody: Rabbit Anti-Wnt1 Polyclonal Antibody (ABIN5667845) at 1:50 for 30 min at RT. Counterstain: Hematoxylin. Magnification: 10X.



### Western Blotting

**Image 2.** Western blot analysis of Human Embryonic kidney epithelial cell line (HEK293T) lysate showing detection of ~41 kDa Wnt1 protein using Rabbit Anti-Wnt1 Polyclonal Antibody (ABIN5667845). Lane 1: Molecular Weight Ladder (MW). Lane 2: HEK293T. Load: 10 µg. Block: 5 % Skim Milk in 1X TBST. Primary Antibody: Rabbit Anti-Wnt1 Polyclonal Antibody (ABIN5667845) at 1:1000 for 2 hours at RT. Secondary Antibody: Goat Anti-Rabbit IgG: HRP at 1:5000 for 1 hour at RT. Color Development: ECL solution for 5 min at RT. Predicted/Observed Size: ~41 kDa. Other Band(s): Band is detected at ~46 kDa, due to post translational modifications.