

Datasheet for ABIN5667969
anti-K-RAS antibody (AA 100-189) (HRP)



[Go to Product page](#)

1 Image

Overview

Quantity:	100 µg
Target:	K-RAS (KRAS)
Binding Specificity:	AA 100-189
Reactivity:	Rat
Host:	Rabbit
Clonality:	Polyclonal
Conjugate:	This K-RAS antibody is conjugated to HRP
Application:	Western Blotting (WB)

Product Details

Immunogen:	Synthetic peptide from the C-terminal of Human KRAS (aa. 100-189)
Specificity:	Detects ~29 kDa. Band is higher than the predicted molecular weight due to post translational modifications.
Purification:	Peptide Affinity Purified

Target Details

Target:	K-RAS (KRAS)
Alternative Name:	KRAS (KRAS Products)
Target Type:	Viral Protein
Gene ID:	3845

Target Details

NCBI Accession: [NP_004976](#)

UniProt: [P01116](#)

Application Details

Application Notes:

- WB (1:1000)
- optimal dilutions for assays should be determined by the user.

Comment: A 1:1000 dilution of ABIN5667969 was sufficient for detection of KRAS in 15 µg of rat Kidney cell lysates by ECL immunoblot analysis using goat anti-rabbit IgG:HRP as the secondary antibody.

Restrictions: For Research Use only

Handling

Format: Liquid

Concentration: 1 mg/mL

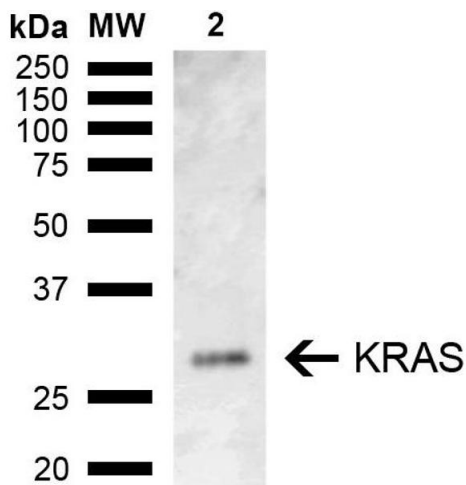
Buffer: PBS pH 7.4, 50 % glycerol, 0.09 % Sodium Azide

Preservative: Sodium azide

Precaution of Use: This product contains Sodium azide: a POISONOUS AND HAZARDOUS SUBSTANCE, which should be handled by trained staff only.

Storage: -20 °C

Images



Western Blotting

Image 1. Western blot analysis of Rat Kidney showing detection of ~21.6 kDa KRAS protein using Rabbit Anti-KRAS Polyclonal Antibody (ABIN5667969). Lane 1: Molecular Weight Ladder (MW). Lane 2: Rat Kidney. Load: 15 µg. Block: 5 % Skim Milk in 1X TBST. Primary Antibody: Rabbit Anti-KRAS Polyclonal Antibody (ABIN5667969) at 1:1000 for 2 hours at RT. Secondary Antibody: Goat Anti-Rabbit IgG: HRP at 1:5000 for 1 hour at RT. Color

Development: ECL solution for 5 min at RT.
Predicted/Observed Size: ~21.6 kDa. Other Band(s): ~29 kDa (PTM).