



[Go to Product page](#)

Datasheet for ABIN566797

## anti-VSTM2L antibody (AA 25-204)

4 Images

1 Publication

### Overview

Quantity:	100 µg
Target:	VSTM2L
Binding Specificity:	AA 25-204
Reactivity:	Human
Host:	Mouse
Clonality:	Monoclonal
Conjugate:	This VSTM2L antibody is un-conjugated
Application:	ELISA, Western Blotting (WB)

### Product Details

Purpose:	Mouse monoclonal antibody raised against a full length recombinant C20orf102.
Immunogen:	C20orf102 (AAH33818.1, 25 a.a. ~ 204 a.a) full-length recombinant protein with GST tag. MW of the GST tag alone is 26 KDa.
Sequence:	TRPAGHAPWD NHVSGHALFT ETPHDMTART GEDVEMACSF RGSGPSYSL EIQWWYVRSH RDWTDKQAWA SNQLKASQQE DAGKEATKIS VVKVVGSNIS HKLRLSRVKP TDEGSYECRV IDFSDGKARH HKVKAYLRVQ PGENSVLHLP EAPPAAPAPP PPKPGKELRK RSV DQEACSL
Clone:	3B9
Isotype:	IgG1
Cross-Reactivity:	Human
Characteristics:	Antibody Reactive Against Recombinant Protein.

## Target Details

---

Target:	VSTM2L
Alternative Name:	VSTM2L ( <a href="#">VSTM2L Products</a> )
Background:	Full Gene Name: V-set and transmembrane domain containing 2 like Synonyms: C20orf102,dJ1118M15.2
Gene ID:	128434

## Application Details

---

Application Notes:	Optimal working dilution should be determined by the investigator.
Restrictions:	For Research Use only

## Handling

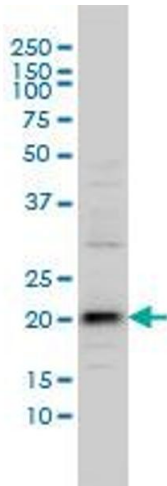
---

Buffer:	In 1x PBS, pH 7.4
Handling Advice:	Aliquot to avoid repeated freezing and thawing.
Storage:	-20 °C
Storage Comment:	Store at -20°C or lower. Aliquot to avoid repeated freezing and thawing.

## Publications

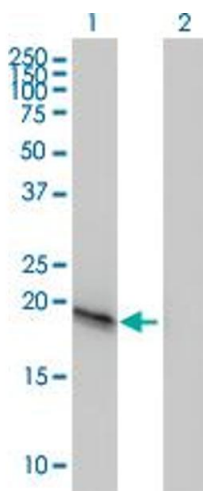
---

Product cited in:	Klee, Finlay, McDonald, Attewell, Hebrink, Dyer, Love, Vasmatzis, Li, Beechem, Klee: "Bioinformatics methods for prioritizing serum biomarker candidates." in: <b>Clinical chemistry</b> , Vol. 52, Issue 11, pp. 2162-4, (2007) ( <a href="#">PubMed</a> ).
-------------------	--



### Western Blotting

**Image 1.** C20orf102 monoclonal antibody (M01), clone 3B9  
Western Blot analysis of C20orf102 expression in IMR-32 .

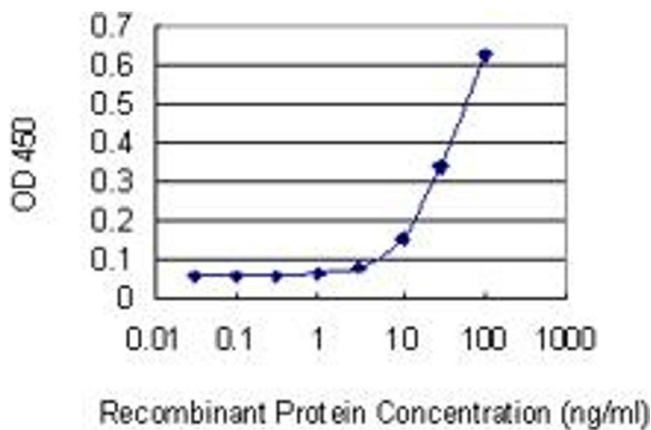


### Western Blotting

**Image 2.** Western Blot analysis of C20orf102 expression in transfected 293T cell line by C20orf102 monoclonal antibody (M01), clone 3B9.

Lane 1: C20orf102 transfected lysate(22 KDa).

Lane 2: Non-transfected lysate.



### ELISA

**Image 3.** Detection limit for recombinant GST tagged VSTM2L is 3 ng/ml as a capture antibody.

Please check the [product details page](#) for more images. Overall 4 images are available for ABIN566797.