



[Go to Product page](#)

Datasheet for ABIN5668044

Recombinant anti-ITGAL (Efalizumab Biosimilar) antibody

1 Image

Overview

Quantity:	200 µg
Target:	ITGAL (Efalizumab Biosimilar)
Reactivity:	Human
Host:	Human
Antibody Type:	Recombinant Antibody
Clonality:	Monoclonal
Conjugate:	This ITGAL (Efalizumab Biosimilar) antibody is un-conjugated
Application:	Flow Cytometry (FACS), Blocking Reagent (BR)

Product Details

Immunogen:	Efalizumab binds to CD11a, a subunit of leukocyte function antigen-1 (LFA-1), which is expressed on all leukocytes.
Clone:	Hu1124
Isotype:	IgG1 kappa
Specificity:	Binds to human LFA-1.
Characteristics:	OriginalSpeciesName: Human OriginalFormat: IgG1
Purification:	Purified antibody.
Purity:	> 98 % as determined by SDS-PAGE
Endotoxin Level:	Endotoxin is < 1.0 EU/mg as determined by the LAL method

Target Details

Target: ITGAL (Efalizumab Biosimilar)

Abstract: [ITGAL \(Efalizumab Biosimilar\) Products](#)

Target Type: Biosimilar

Background: LFA-1, integrin alpha L

UniProt: [P20701](#)

Application Details

Application Notes: Efalizumab binds to the LFA-1 alpha I domain blocking the ICAM-1 binding site via steric hindrance.

Restrictions: For Research Use only

Handling

Buffer: PBS with 0.02 % Proclin 300.

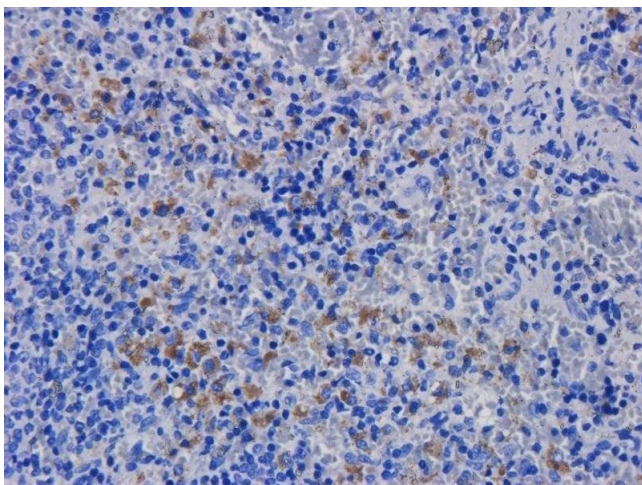
Preservative: ProClin

Precaution of Use: This product contains ProClin: a POISONOUS AND HAZARDOUS SUBSTANCE which should be handled by trained staff only.

Storage: 4 °C, -20 °C

Storage Comment: Store at 4°C for up to 3 months. For longer storage, aliquot and store at -20°C.

Images



Immunohistochemistry

Image 1. Immunohistochemical staining of rat spleen tissue using anti-CD11a antibody hu1124 (Efalizumab). Anti-CD11a staining of formaldehyde fixed paraffin embedded rat spleen tissue, at 40x magnification. The human IgG1-chimeric version of hu1124 (ABIN5668044) was used to stain samples at a concentration of 3 µg/mL.