



[Go to Product page](#)

Datasheet for ABIN5668045

## Recombinant anti-ITGAL (Efalizumab Biosimilar) antibody

### 1 Image

#### Overview

Quantity:	200 µg
Target:	ITGAL (Efalizumab Biosimilar)
Reactivity:	Human
Host:	Rabbit
Antibody Type:	Recombinant Antibody
Clonality:	Monoclonal
Conjugate:	This ITGAL (Efalizumab Biosimilar) antibody is un-conjugated
Application:	Flow Cytometry (FACS), Blocking Reagent (BR)

#### Product Details

Immunogen:	Efalizumab binds to CD11a, a subunit of leukocyte function antigen-1 (LFA-1), which is expressed on all leukocytes.
Clone:	Hu1124
Isotype:	IgG kappa
Specificity:	Binds to human LFA-1.
Characteristics:	OriginalSpeciesName: Human OriginalFormat: IgG1
Purification:	Purified antibody.
Purity:	> 98 % as determined by SDS-PAGE
Endotoxin Level:	Endotoxin is < 1.0 EU/mg as determined by the LAL method

## Target Details

---

Target:	ITGAL (Efalizumab Biosimilar)
Abstract:	<a href="#">ITGAL (Efalizumab Biosimilar) Products</a>
Target Type:	Biosimilar
Background:	LFA-1, integrin alpha L
UniProt:	<a href="#">P20701</a>

## Application Details

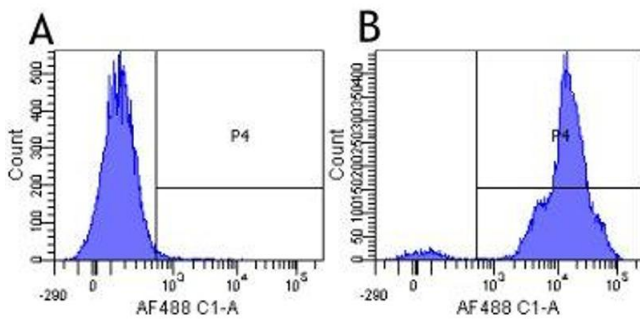
---

Application Notes:	Efalizumab binds to the LFA-1 alpha I domain blocking the ICAM-1 binding site via steric hindrance.
Comment:	This chimeric rabbit antibody was made using the variable domain sequences of the original Human IgG1 format, for improved compatibility with existing reagents, assays and techniques.
Restrictions:	For Research Use only

## Handling

---

Buffer:	PBS with 0.02 % Proclin 300.
Preservative:	ProClin
Precaution of Use:	This product contains ProClin: a POISONOUS AND HAZARDOUS SUBSTANCE which should be handled by trained staff only.
Storage:	4 °C, -20 °C
Storage Comment:	Store at 4°C for up to 3 months. For longer storage, aliquot and store at -20°C.



### Flow Cytometry

**Image 1.** Flow-cytometry using the anti-CD11a research biosimilar antibody Efalizumab (hu1124, ) Human lymphocytes were stained with an isotype control (panel A) or the rabbit-chimeric version of Efalizumab ( panel B) at a concentration of 1 µg/ml for 30 mins at RT. After washing, bound antibody was detected using a AF488 conjugated donkey anti-rabbit antibody (ab150073) and cells analysed on a FACSCanto flow-cytometer.