



[Go to Product page](#)

Datasheet for ABIN5668058

Recombinant anti-EGFR (Cetuximab Biosimilar) antibody

2 Images

Overview

| | |
|----------------|--|
| Quantity: | 200 µg |
| Target: | EGFR (Cetuximab Biosimilar) |
| Reactivity: | Human |
| Host: | Human |
| Antibody Type: | Recombinant Antibody |
| Clonality: | Monoclonal |
| Conjugate: | This EGFR (Cetuximab Biosimilar) antibody is un-conjugated |
| Application: | Flow Cytometry (FACS), Blocking Reagent (BR) |

Product Details

| | |
|------------------|--|
| Immunogen: | The epidermal growth factor receptor is the cell-surface receptor for members of the epidermal growth factor family (EGF-family) of extracellular protein ligands. |
| Clone: | C225 |
| Isotype: | IgG1 kappa |
| Specificity: | Recognises human EGFR. |
| Characteristics: | OriginalSpeciesName: Human OriginalFormat: IgG1 |
| Purification: | Purified antibody. |
| Purity: | > 98 % as determined by SDS-PAGE |
| Endotoxin Level: | Endotoxin is < 1.0 EU/mg as determined by the LAL method |

Target Details

| | |
|--------------|--|
| Target: | EGFR (Cetuximab Biosimilar) |
| Abstract: | EGFR (Cetuximab Biosimilar) Products |
| Target Type: | Biosimilar |
| Background: | EGFR, ErbB-1, HER1, epidermal growth factor receptor |
| UniProt: | P00533 |

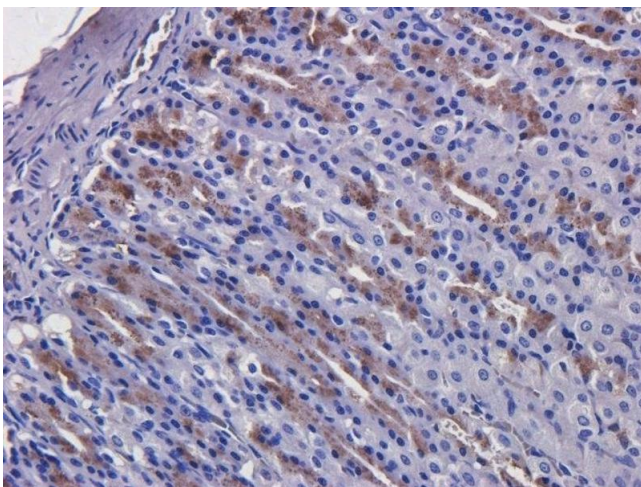
Application Details

| | |
|--------------------|--|
| Application Notes: | Optimal working dilution should be determined by the investigator. |
| Comment: | NOT FOR THERAPEUTIC USE - This is a research-grade biosimilar. |
| Restrictions: | For Research Use only |

Handling

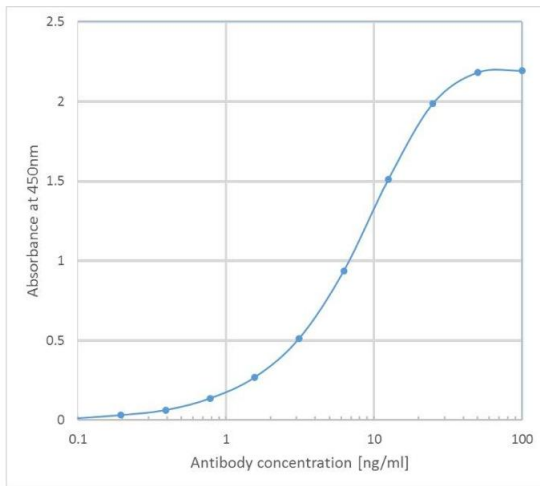
| | |
|--------------------|---|
| Buffer: | PBS with 0.02 % Proclin 300. |
| Preservative: | ProClin |
| Precaution of Use: | This product contains ProClin: a POISONOUS AND HAZARDOUS SUBSTANCE which should be handled by trained staff only. |
| Storage: | 4 °C,-20 °C |
| Storage Comment: | Store at 4°C for up to 3 months. For longer storage, aliquot and store at -20°C. |

Images



Immunohistochemistry

Image 1. Immunohistochemical staining of rat stomach tissue using anti-EGFR antibody C225 (Cetuximab) Anti-EGFR staining of formaldehyde fixed paraffin embedded rat stomach tissue, at 40x magnification. The human IgG1-chimeric version of C225 (ABIN5668058) was used to stain samples at a concentration of 5 µg/mL.



ELISA

Image 2. Binding curve of anti-EGFR antibody to EGFR-Fc fusion protein ELISAPlate coated with human EGFR-Fc at a concentration of 2.0 mg/ml. A 2-fold serial dilution from 100 to 0.1 ng/ml was performed using HRP labelled cetuximab human IgG1 .