



Datasheet for ABIN5668060

Recombinant anti-EGFR (Matuzumab Biosimilar) antibody (Extracellular Domain)



[Go to Product page](#)

3 Images

Overview

Quantity:	200 µg
Target:	EGFR (Matuzumab Biosimilar)
Binding Specificity:	Extracellular Domain
Reactivity:	Human
Host:	Human
Antibody Type:	Recombinant Antibody
Clonality:	Monoclonal
Application:	Flow Cytometry (FACS), Western Blotting (WB), Blocking Reagent (BR)

Product Details

Immunogen:	The parental mouse antibody was generated by immunizing BALB/c mice intraperitoneally with A431 cells in phosphate buffered saline (PBS). Later on the humanized version of the antibody was created by grafting CDRs of the murine antibody onto human constant regions.
Isotype:	IgG1 kappa
Specificity:	Binds to human EGFR.
Characteristics:	OriginalSpeciesName: Human OriginalFormat: IgG1
Purification:	Purified antibody.
Purity:	> 98 % as determined by SDS-PAGE
Endotoxin Level:	Endotoxin is < 1.0 EU/mg as determined by the LAL method

Target Details

Target:	EGFR (Matuzumab Biosimilar)
Abstract:	EGFR (Matuzumab Biosimilar) Products
Background:	ErbB-1, ERBB1, HER1, EGF, Epidermal growth factor receptor, Proto-oncogene c-ErbB-1, Receptor tyrosine-protein kinase erbB-1, EMD72000, mAb425, 425, mAb 425
UniProt:	P00533

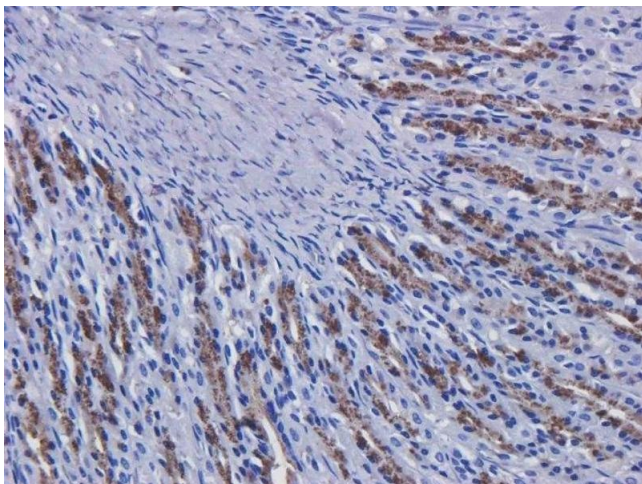
Application Details

Application Notes:	This antibody binds to human EGFR at a site distinct from the antigen binding site, preventing conformational re-arrangement required for dimerization, a process essential for high-affinity ligand binding (Schmiedel 2008).
Restrictions:	For Research Use only

Handling

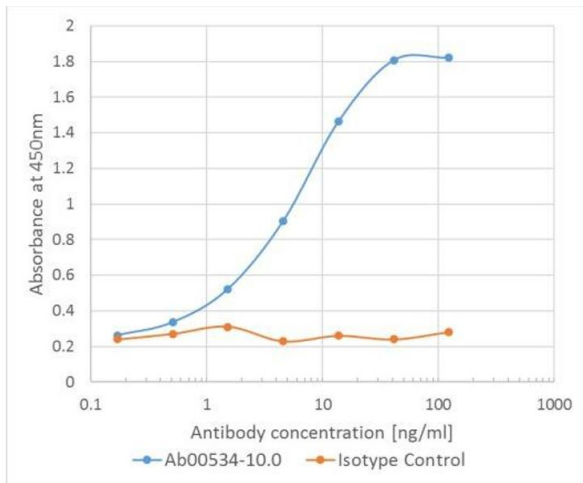
Buffer:	PBS with 0.02 % Proclin 300.
Preservative:	ProClin
Precaution of Use:	This product contains ProClin: a POISONOUS AND HAZARDOUS SUBSTANCE which should be handled by trained staff only.
Storage:	4 °C, -20 °C
Storage Comment:	Store at 4°C for up to 3 months. For longer storage, aliquot and store at -20°C.

Validation report #100071 for Immunofluorescence (IF)



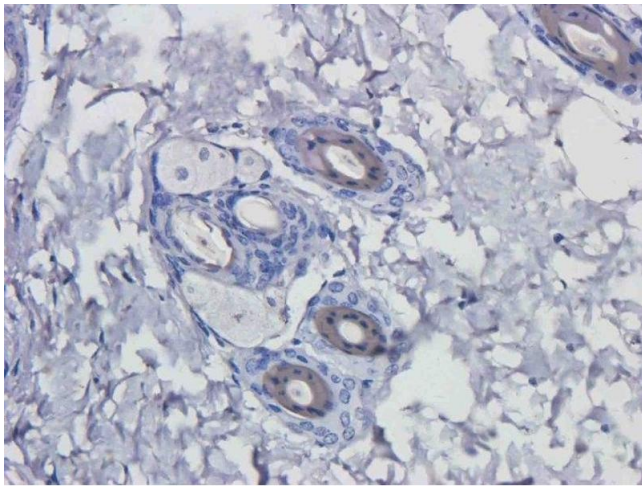
Immunohistochemistry

Image 1. Immunohistochemical staining of rat stomach tissue using anti-EGFR antibody Matuzumab. Anti-EGFR staining of formaldehyde fixed paraffin embedded rat stomach tissue, at 40x magnification. The human IgG1-chimeric version of Matuzumab (ABIN5668060) was used to stain samples at a concentration of 5 µg/mL.



ELISA

Image 2. Binding curve of anti-EGFR antibody Matuzumab to EGFR-Fc fusion protein ELISA Plate coated with human EGFR-Fc at a concentration of 5 µg/ml. A 3-fold serial dilution from 100 to 0.1 ng/ml was performed using . For detection, a 1:4000 dilution of HRP labelled anti-human kappa light chain antibody was used.



Immunohistochemistry

Image 3. Immunohistochemical staining of mouse skin tissue using anti-EGFR antibody Matuzumab. Anti-EGFR staining of formaldehyde fixed paraffin embedded mouse skin tissue, at 40x magnification. The human IgG1-chimeric version of Matuzumab (ABIN5668060) was used to stain samples at a concentration of 5 µg/mL.