

Datasheet for ABIN5668061

**Recombinant anti-EGFR (Matuzumab Biosimilar) antibody
(Extracellular Domain)**[Go to Product page](#)**1** Image

Overview

Quantity:	200 µg
Target:	EGFR (Matuzumab Biosimilar)
Binding Specificity:	Extracellular Domain
Reactivity:	Human
Host:	Rabbit
Antibody Type:	Recombinant Antibody
Clonality:	Chimeric
Conjugate:	This EGFR (Matuzumab Biosimilar) antibody is un-conjugated
Application:	Flow Cytometry (FACS), Western Blotting (WB), Blocking Reagent (BR)

Product Details

Immunogen:	The parental mouse antibody was generated by immunizing BALB/c mice intraperitoneally with A431 cells in phosphate buffered saline (PBS). Later on the humanized version of the antibody was created by grafting CDRs of the murine antibody onto human constant regions.
Isotype:	IgG kappa
Specificity:	Binds to human EGFR.
Characteristics:	OriginalSpeciesName: Human OriginalFormat: IgG1
Purification:	Purified antibody.
Purity:	> 98 % as determined by SDS-PAGE

Product Details

Endotoxin Level: Endotoxin is < 1.0 EU/mg as determined by the LAL method

Target Details

Target: EGFR (Matuzumab Biosimilar)

Abstract: [EGFR \(Matuzumab Biosimilar\) Products](#)

Background: ErbB-1, ERBB1, HER1, EGF, Epidermal growth factor receptor, Proto-oncogene c-ErbB-1, Receptor tyrosine-protein kinase erbB-1, EMD72000, mAb425, 425, mAb 425

UniProt: [P00533](#)

Application Details

Application Notes: This antibody binds to human EGFR at a site distinct from the antigen binding site, preventing conformational re-arrangement required for dimerization, a process essential for high-affinity ligand binding (Schmiedel 2008).

Comment: This chimeric rabbit antibody was made using the variable domain sequences of the original Human IgG1 format, for improved compatibility with existing reagents, assays and techniques.

Restrictions: For Research Use only

Handling

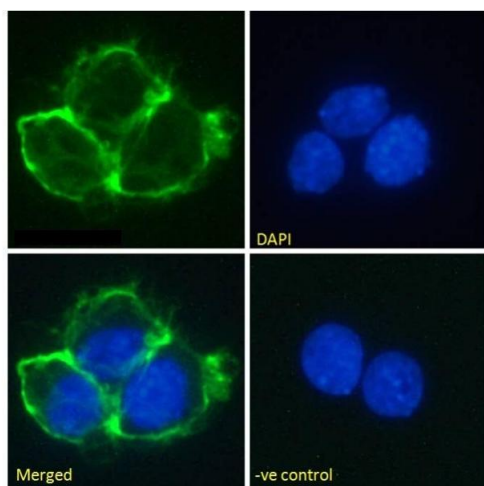
Buffer: PBS with 0.02 % Proclin 300.

Preservative: ProClin

Precaution of Use: This product contains ProClin: a POISONOUS AND HAZARDOUS SUBSTANCE which should be handled by trained staff only.

Storage: 4 °C, -20 °C

Storage Comment: Store at 4°C for up to 3 months. For longer storage, aliquot and store at -20°C.



Immunofluorescence

Image 1. Immunofluorescence staining of fixed A431 cells with anti-EGFR antibody Matuzumab. Immunofluorescence analysis of unpermeabilised paraformaldehyde fixed A431 cells on Shi-fix™ coverslips stained with the chimeric rabbit version of Matuzumab (ABIN5668061) at 10 µg/mL for 1h followed by Alexa Fluor®488 secondary antibody (1 µg/mL), showing membrane staining. The nuclear stain is DAPI (blue). Panels show from left-right, top-bottom ABIN5668061, DAPI, merged channels and an isotype control. The isotype control was stained with unimmunised rabbit IgG followed by Alexa Fluor®488 secondary antibody.