

Datasheet for ABIN566816
anti-EGFLAM antibody (AA 914-1001)



[Go to Product page](#)

4 Images

Overview

Quantity:	50 µL
Target:	EGFLAM
Binding Specificity:	AA 914-1001
Reactivity:	Human
Host:	Mouse
Clonality:	Polyclonal
Conjugate:	This EGFLAM antibody is un-conjugated
Application:	Western Blotting (WB), ELISA

Product Details

Purpose:	Mouse polyclonal antibody raised against a partial recombinant FLJ39155.
Immunogen:	FLJ39155 (NP_689616, 914 a.a. ~ 1001 a.a) partial recombinant protein with GST tag.
Sequence:	DGRWHRVKAV RDGQSGKITV DDYGARTGKS PGMMRQLNIN GALYVGGMKE IALHTNRQYM RGLVGCISHF TLSTDYHISL VEDAVDGK
Cross-Reactivity:	Human, Mouse, Rat
Characteristics:	Antibody Reactive Against Recombinant Protein.

Target Details

Target:	EGFLAM
Alternative Name:	EGFLAM (EGFLAM Products)

Target Details

Background:	Full Gene Name: EGF-like, fibronectin type III and laminin G domains Synonyms: AGRINL,AGRNL,FLJ39155
Gene ID:	133584
NCBI Accession:	NM_152403
Pathways:	Glycosaminoglycan Metabolic Process

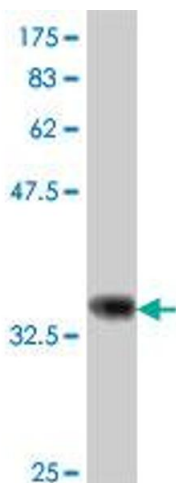
Application Details

Application Notes:	Optimal working dilution should be determined by the investigator.
Restrictions:	For Research Use only

Handling

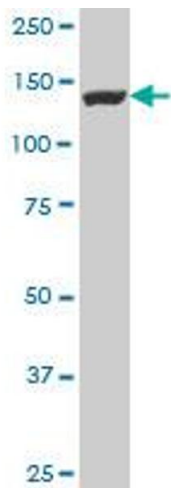
Format:	Liquid
Buffer:	50 % glycerol
Handling Advice:	Aliquot to avoid repeated freezing and thawing.
Storage:	-20 °C
Storage Comment:	Store at -20°C or lower. Aliquot to avoid repeated freezing and thawing.

Images



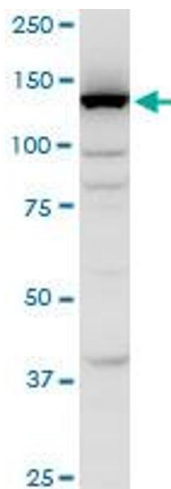
Western Blotting

Image 1. Western Blot detection against Immunogen (35.79 KDa) .



Western Blotting

Image 2. FLJ39155 polyclonal antibody (A01), Lot # 051024JC01 Western Blot analysis of FLJ39155 expression in NIH/3T3 .



Western Blotting

Image 3. FLJ39155 polyclonal antibody (A01), Lot # 051024JC01. Western Blot analysis of FLJ39155 expression in PC-12.

Please check the [product details page](#) for more images. Overall 4 images are available for ABIN566816.