

Datasheet for ABIN5668183

Recombinant anti-MS4A1 (Rituximab Biosimilar) antibody



[Go to Product page](#)

3 Images

Overview

Quantity:	200 µg
Target:	MS4A1 (Rituximab Biosimilar)
Reactivity:	Human, Cynomolgus, Rhesus Monkey
Host:	Rabbit
Antibody Type:	Recombinant Antibody
Clonality:	Monoclonal
Application:	Flow Cytometry (FACS)

Product Details

Immunogen:	Human lymphoblastoid cell line SB.
Clone:	10F381
Isotype:	IgG kappa
Specificity:	CD20 (Human B-lymphocyte-restricted differentiation antigen, Bp35), is a hydrophobic transmembrane protein with a molecular weight of approximately 35 kDa located on pre-B and mature B lymphocytes, and most B-cell non-Hodgkin's lymphomas, but is not found on stem cells, pro-B cells, normal plasma cells or other normal tissues .
Characteristics:	OriginalSpeciesName: Human OriginalFormat: IgG1
Purification:	Purified antibody.
Purity:	> 98 % as determined by SDS-PAGE

Product Details

Endotoxin Level: Endotoxin is < 1.0 EU/mg as determined by the LAL method

Target Details

Target: MS4A1 (Rituximab Biosimilar)

Abstract: [MS4A1 \(Rituximab Biosimilar\) Products](#)

Target Type: Biosimilar

Background: Leu16, B-lymphocyte antigen CD20, B-lymphocyte surface antigen B1, Bp35 Leukocyte surface antigen Leu-16, Membrane-spanning 4-domains subfamily A member 1, CD20

UniProt: [P11836](#)

Application Details

Application Notes: Optimal working dilution should be determined by the investigator.

Comment: This chimeric rabbit antibody was made using the variable domain sequences of the original Human IgG1 format, for improved compatibility with existing reagents, assays and techniques.

Restrictions: For Research Use only

Handling

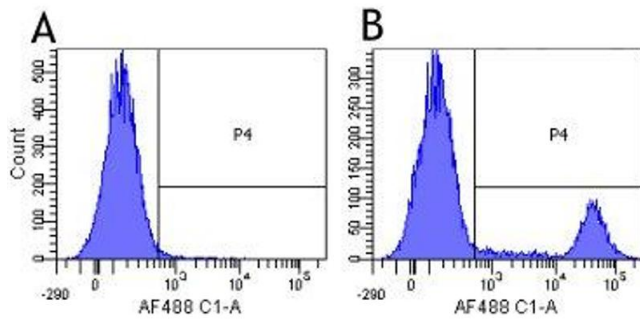
Buffer: PBS with 0.02 % Proclin 300.

Preservative: ProClin

Precaution of Use: This product contains ProClin: a POISONOUS AND HAZARDOUS SUBSTANCE which should be handled by trained staff only.

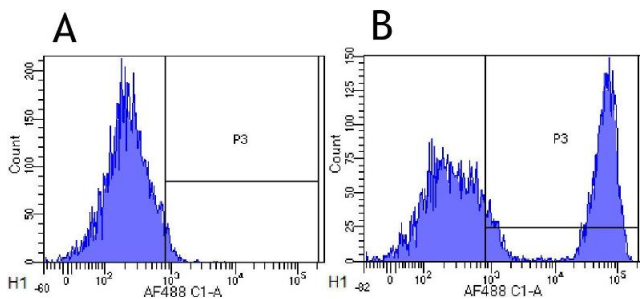
Storage: 4 °C,-20 °C

Storage Comment: Store at 4°C for up to 3 months. For longer storage, aliquot and store at -20°C.



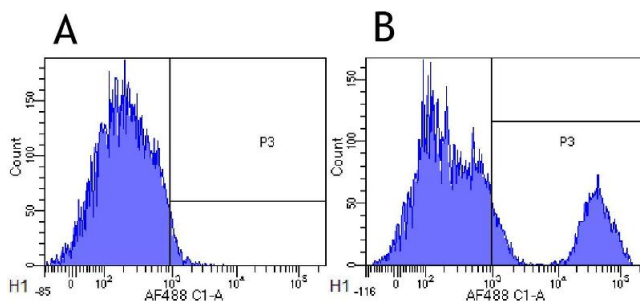
Flow Cytometry

Image 1. Flow-cytometry using the anti-CD20 research biosimilar antibody Rituximab Human lymphocytes were stained with an isotype control (panel A) or the rabbit-chimeric version of Rituximab (panel B) at a concentration of 1 µg/ml for 30 mins at RT. After washing, bound antibody was detected using a AF488 conjugated donkey anti-rabbit antibody (ab150073) and cells analysed on a FACSCanto flow-cytometer.



Flow Cytometry

Image 2. Flow-cytometry using the anti-CD20 research biosimilar antibody Rituximab Rhesus monkey lymphocytes were stained with an isotype control (panel A) or the rabbit-chimeric version of Rituximab (panel B) at a concentration of 1 µg/ml for 30 mins at RT. After washing, bound antibody was detected using a AF488 conjugated donkey anti-rabbit antibody (ab150073) and cells analysed on a FACSCanto flow-cytometer.



Flow Cytometry

Image 3. Flow-cytometry using the anti-CD20 research biosimilar antibody Rituximab Cynomolgus monkey lymphocytes were stained with an isotype control (panel A) or the rabbit-chimeric version of Rituximab (panel B) at a concentration of 1 µg/ml for 30 mins at RT. After washing, bound antibody was detected using a AF488 conjugated donkey anti-rabbit antibody (ab150073) and cells analysed on a FACSCanto flow-cytometer.