

Datasheet for ABIN5668193

## Recombinant anti-CD3 epsilon antibody



[Go to Product page](#)

### 4 Images

#### Overview

Quantity:	200 µg
Target:	CD3 epsilon (CD3E)
Reactivity:	Human
Host:	Rabbit
Antibody Type:	Recombinant Antibody
Clonality:	Chimeric
Conjugate:	This CD3 epsilon antibody is un-conjugated
Application:	Western Blotting (WB), Immunohistochemistry (IHC), Immunofluorescence (IF)

#### Product Details

Purpose:	Anti-CD3 epsilon [YTH 12.5], Rabbit IgG, lambda
Immunogen:	Human CD3.
Clone:	YTH 12-5
Isotype:	IgG lambda
Specificity:	Recognises the epsilon chain of the human CD3 antigen complex on human T cells.
Characteristics:	Original Species of Ab: Rat Original Format of Ab: IgG2b
Purification:	Protein A affinity purified

## Target Details

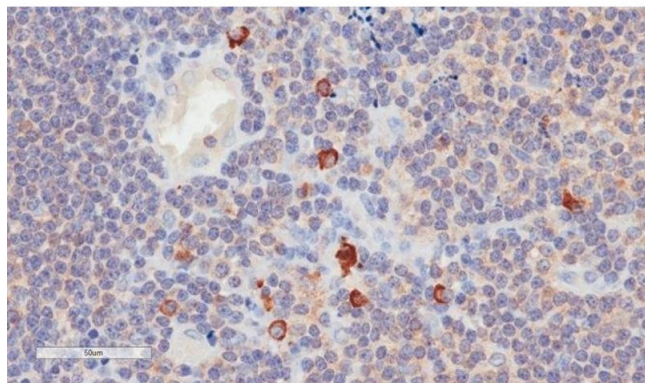
Target:	CD3 epsilon (CD3E)
Alternative Name:	CD3 epsilon ( <a href="#">CD3E Products</a> )
Background:	CD3e, T-cell surface glycoprotein CD3 epsilon chain, T-cell surface antigen T3/Leu-4 epsilon chain, CD3e, CD3E, T3E, YTH12.5
UniProt:	<a href="#">P07766</a>
Pathways:	<a href="#">TCR Signaling</a> , <a href="#">CXCR4-mediated Signaling Events</a> , <a href="#">Ubiquitin Proteasome Pathway</a>

## Application Details

Application Notes:	Optimal working dilution should be determined by the investigator.
Comment:	This chimeric rabbit antibody was made using the variable domain sequences of the original rat IgG2b format, for improved compatibility with existing reagents, assays and techniques.
Restrictions:	For Research Use only

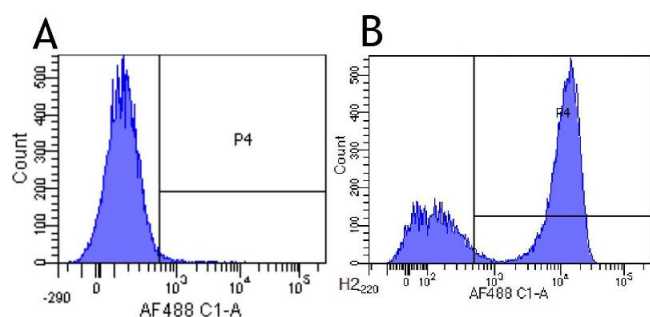
## Handling

Concentration:	1 mg/mL
Buffer:	PBS with 0.02 % Proclin 300.
Preservative:	ProClin
Precaution of Use:	This product contains ProClin: a POISONOUS AND HAZARDOUS SUBSTANCE which should be handled by trained staff only.
Storage:	4 °C,-20 °C
Storage Comment:	Store at 4°C for up to 3 months. For longer storage, aliquot and store at -20°C.



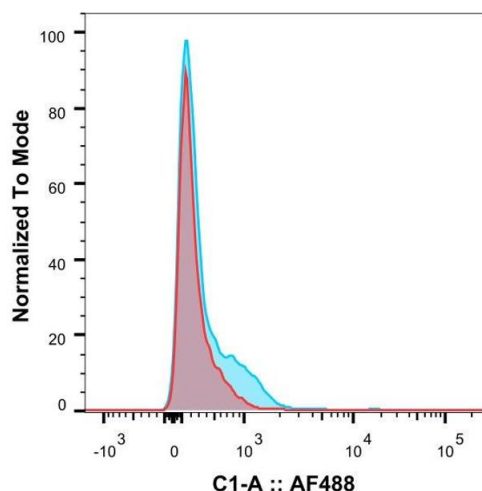
### Immunohistochemistry

**Image 1.** Immunohistochemical staining of human tonsil tissue using anti-CD3E antibody. YTH 12.5 Anti-CD3E staining of paraffin embedded human tissue using the rabbit-chimeric version of YTH 12.5 (ABIN5668193). Antigen retrieval was achieved by microwaving in citrate buffer (pH 6), followed by blocking with protein block serum-free buffer (Dako, cat. #X0909). Primary antibody incubation with ABIN5668193 was carried out at 4 μg/mL for 30 minutes. Samples were then incubated with an anti-rabbit IgG HRP secondary antibody (Dako cat#K4009) for 20 mins followed by DAB (3,3'-diaminobenzidine), and counter-staining with haematoxylin. Strong membrane staining of T-cells at the periphery of the germinal centre and between follicles may be observed. Recommended concentration, 2-4 μg/mL.



### Flow Cytometry

**Image 2.** Flow-cytometry using anti-CD3 epsilon antibody YTH 12.5 Human lymphocytes were stained with an isotype control (panel A) or the rabbit-chimeric version of YTH 12.5 (panel B) at a concentration of 1 μg/ml for 30 mins at RT. After washing, bound antibody was detected using a AF488 conjugated donkey anti-rabbit antibody (ab150073) and cells analysed on a FACSCanto flow-cytometer.



### Flow Cytometry

**Image 3.** Flow-cytometry using anti-CD3 antibody YTH 12.5 Rhesus monkey lymphocytes were stained with an isotype control (red) or the rabbit-chimeric version of YTH 12.5 (blue) at a concentration of 1 μg/ml for 30 mins at RT. After washing, bound antibody was detected using a AF488 conjugated donkey anti-rabbit antibody (ab150073) and cells analysed on a FlowJo single-cell flow cytometer.

## Images

---

Please check the [product details page](#) for more images. Overall 4 images are available for ABIN5668193.