



[Go to Product page](#)

Datasheet for ABIN5668197

Recombinant anti-ITGA4 (Natalizumab Biosimilar) antibody

1 Image

Overview

Quantity:	200 µg
Target:	ITGA4 (Natalizumab Biosimilar)
Reactivity:	Human
Host:	Rabbit
Antibody Type:	Recombinant Antibody
Clonality:	Chimeric
Conjugate:	This ITGA4 (Natalizumab Biosimilar) antibody is un-conjugated
Application:	Flow Cytometry (FACS), Blocking Reagent (BR)

Product Details

Immunogen:	The RAMOS cell line, a non-EBV releasing cell line, injected into mice.
Isotype:	IgG kappa
Specificity:	This antibody binds to the alpha 4 binds subunit of $\alpha 4\beta 1$ (also known as very late antigen 4 [VLA-4] or CD49d-CD29) and $\alpha 4\beta 7$ integrin
Characteristics:	OriginalSpeciesName: Human OriginalFormat: IgG4
Purification:	Purified antibody.
Purity:	> 98 % as determined by SDS-PAGE
Endotoxin Level:	Endotoxin is < 1.0 EU/mg as determined by the LAL method

Target Details

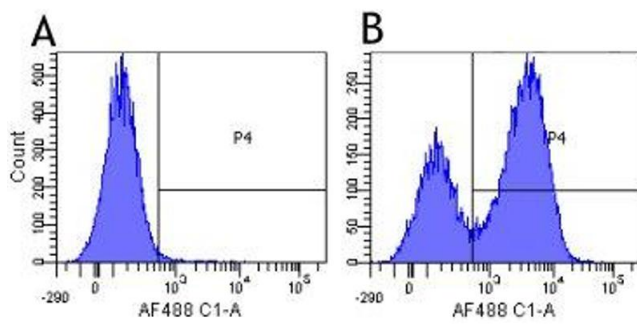
Target:	ITGA4 (Natalizumab Biosimilar)
Abstract:	ITGA4 (Natalizumab Biosimilar) Products
Background:	CD49D, alpha 4 subunit of VLA-4 receptor, ITGA4, Integrin alpha-IV
UniProt:	P13612

Application Details

Application Notes:	This antibody binds to human integrin alpha 4 and has been used to treat Multiple Sclerosis and Crohn's Disease.
Comment:	NOT FOR THERAPEUTIC USE - This is a research-grade biosimilar. This chimeric rabbit antibody was made using the variable domain sequences of the original human IgG4 format, for improved compatibility with existing reagents, assays and techniques.
Restrictions:	For Research Use only

Handling

Buffer:	PBS with 0.02 % Proclin 300.
Preservative:	ProClin
Precaution of Use:	This product contains ProClin: a POISONOUS AND HAZARDOUS SUBSTANCE which should be handled by trained staff only.
Storage:	4 °C,-20 °C
Storage Comment:	Store at 4°C for up to 3 months. For longer storage, aliquot and store at -20°C.



Flow Cytometry

Image 1. Flow-cytometry using the anti-Integrin alpha 4 research biosimilar antibody Natalizumab Human lymphocytes were stained with an isotype control (panel A) or the rabbit-chimeric version of Natalizumab (panel B) at a concentration of 1 $\mu\text{g/ml}$ for 30 mins at RT. After washing, bound antibody was detected using a AF488 conjugated donkey anti-rabbit antibody (ab150073) and cells analysed on a FACSCanto flow-cytometer.