

Datasheet for ABIN5668201

**Recombinant anti-CD8B antibody**[Go to Product page](#)**1** Image

## Overview

Quantity:	200 µg
Target:	CD8B
Reactivity:	Mouse
Host:	Rabbit
Antibody Type:	Recombinant Antibody
Clonality:	Chimeric
Conjugate:	This CD8B antibody is un-conjugated
Application:	Flow Cytometry (FACS), Immunohistochemistry (IHC)

## Product Details

Purpose:	Anti-CD8 beta [YTS 156.7.7], Rabbit IgG, kappa
Immunogen:	Mouse CD8 (lyt-3).
Clone:	YTS 156-7-7
Isotype:	IgG kappa
Specificity:	The antibody recognises the B epitope of the mouse Lyt-3 (CD8) antigen. Has been used in CD8 subset depletion in vivo and flow cytometry studies.
Characteristics:	Original Species of Ab: Rat Original Format of Ab: IgG2b
Purification:	Protein A affinity purified

## Target Details

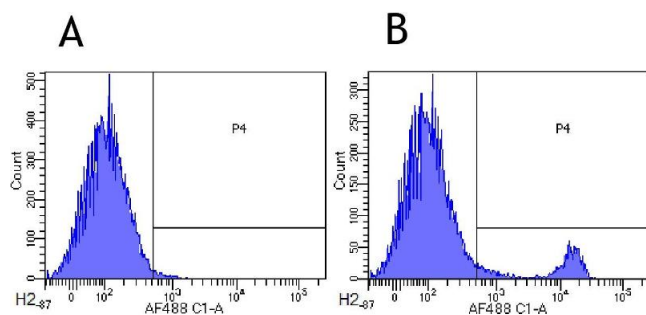
Target:	CD8B
Alternative Name:	CD8 beta ( <a href="#">CD8B Products</a> )
Background:	Lyt-3, T-cell surface glycoprotein CD8 beta chain, Lymphocyte antigen 3, T-cell membrane glycoprotein Ly-3, T-cell surface glycoprotein Lyt-3, CD8b, Cd8b, Cd8b1, Ly-3, Lyt-3, Lyt3
UniProt:	<a href="#">P10300</a>
Pathways:	<a href="#">TCR Signaling</a>

## Application Details

Application Notes:	This antibody recognizes murine CD8 beta.
Comment:	This chimeric rabbit antibody was made using the variable domain sequences of the original format, for improved compatibility with existing reagents, assays and techniques.
Restrictions:	For Research Use only

## Handling

Concentration:	1 mg/mL
Buffer:	PBS with 0.02 % Proclin 300.
Preservative:	ProClin
Precaution of Use:	This product contains ProClin: a POISONOUS AND HAZARDOUS SUBSTANCE which should be handled by trained staff only.
Storage:	4 °C,-20 °C
Storage Comment:	Store at 4°C for up to 3 months. For longer storage, aliquot and store at -20°C.



### Flow Cytometry

**Image 1.** Flow-cytometry using anti-CD8beta antibody YTS 156.7.7. Mouse lymphocytes were stained with an anti-CD44 control (-23.0, panel A) or the rabbit-chimeric version of YTS 156.7.7 (panel B) at a concentration of 1 µg/ml for 30 mins at RT. After washing, bound antibody was detected using a AF488 conjugated donkey anti-rabbit antibody (ab150073) and cells analysed on a FACSCanto flow-cytometer.