



Datasheet for ABIN5668211

Recombinant anti-CD33 (Gemtuzumab Biosimilar) antibody[Go to Product page](#)

1 Image

Overview

Quantity:	200 µg
Target:	CD33 (Gemtuzumab Biosimilar)
Reactivity:	Human
Host:	Rabbit
Antibody Type:	Recombinant Antibody
Clonality:	Monoclonal
Conjugate:	This CD33 (Gemtuzumab Biosimilar) antibody is un-conjugated
Application:	Flow Cytometry (FACS), Immunofluorescence (IF)

Product Details

Immunogen:	Gemtuzumab was generated by humanization of the murine P67.6 clone, raised against CD33-transfected FMY9S5 cells of human origin. CD33 is a transmembrane receptor expressed on predominantly on cells of the myeloid lineage, but it can also be found on some lymphoid cells.
Clone:	HP67-6
Isotype:	IgG kappa
Specificity:	Recognises human CD33.
Characteristics:	OriginalSpeciesName: Human OriginalFormat: IgG4
Purification:	Purified antibody.
Purity:	> 98 % as determined by SDS-PAGE

Product Details

Endotoxin Level: Endotoxin is < 1.0 EU/mg as determined by the LAL method

Target Details

Target: CD33 (Gemtuzumab Biosimilar)

Abstract: [CD33 \(Gemtuzumab Biosimilar\) Products](#)

Target Type: Biosimilar

Background: Siglec-3

UniProt: [P20138](#)

Application Details

Application Notes: A human IgG4 variant conjugated to derivative of the cytotoxic drug calicheamicin gamma 1, N-acetylcalticheamicin dimethyl hydrazide, has been used as a therapeutic against acute myeloid leukemia. This antibody may also be used in flow cytometry and immunofluorescence.

Comment: This chimeric rabbit antibody was made using the variable domain sequences of the original Human IgG4 format, for improved compatibility with existing reagents, assays and techniques.

Restrictions: For Research Use only

Handling

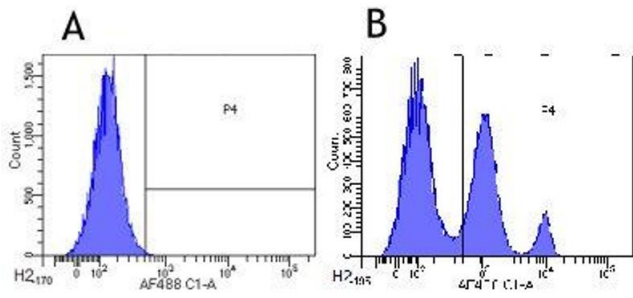
Buffer: PBS with 0.02 % Proclin 300.

Preservative: ProClin

Precaution of Use: This product contains ProClin: a POISONOUS AND HAZARDOUS SUBSTANCE which should be handled by trained staff only.

Storage: 4 °C,-20 °C

Storage Comment: Store at 4°C for up to 3 months. For longer storage, aliquot and store at -20°C.



Flow Cytometry

Image 1. Flow-cytometry using anti-CD33 antibody hP67.6 (Gemtuzumab) Human leukocytes were stained with an isotype control (panel A) or the rabbit-chimeric version of hP67.6 (Gemtuzumab) (panel B) at a concentration of 1 µg/ml for 30 mins at RT. After washing, bound antibody was detected using a AF488 conjugated donkey anti-rabbit antibody (ab150073) and cells analysed on a FACSCanto flow-cytometer.