

Datasheet for ABIN5668215

Recombinant anti-C3AR1 antibody[Go to Product page](#)**1** Image

Overview

Quantity:	200 µg
Target:	C3AR1
Reactivity:	Human
Host:	Rabbit
Antibody Type:	Recombinant Antibody
Clonality:	Chimeric
Application:	Flow Cytometry (FACS), ELISA

Product Details

Immunogen:	The 2e loop of the C3a receptor.
Clone:	3G7
Isotype:	IgG kappa
Specificity:	Binds specifically to the 2e loop of the human C3a receptor, residues 185-193.
Characteristics:	OriginalSpeciesName: Mouse OriginalFormat: scFv
Purification:	Purified antibody.

Target Details

Target:	C3AR1
Alternative Name:	C3a-receptor (C3AR1 Products)

Target Details

Background:	Complement component receptor 1, C3AR1
UniProt:	Q16581
Pathways:	Complement System

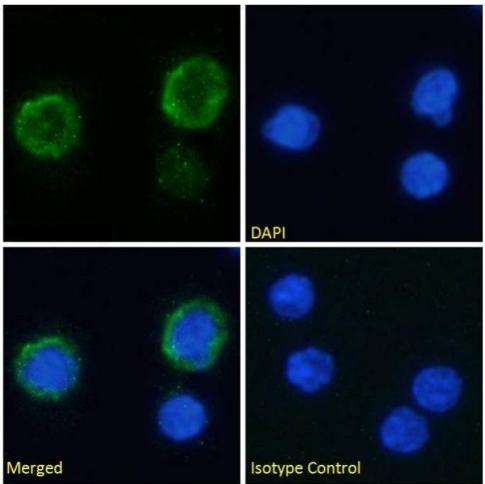
Application Details

Application Notes:	This scFv antibody binds to the 2e loop of the human C3a receptor, a G protein-coupled receptor stimulating chemotaxis, superoxide anion generation and granule enzyme release.
Comment:	This full-length, chimeric rabbit antibody was made using the variable domain sequences of the original Mouse scFv format, for improved compatibility with existing reagents, assays and techniques.
Restrictions:	For Research Use only

Handling

Buffer:	PBS with 0.02 % Proclin 300.
Preservative:	ProClin
Precaution of Use:	This product contains ProClin: a POISONOUS AND HAZARDOUS SUBSTANCE which should be handled by trained staff only.
Storage:	4 °C, -20 °C
Storage Comment:	Store at 4°C for up to 3 months. For longer storage, aliquot and store at -20°C.

Images



Immunofluorescence

Image 1. Immunofluorescence staining of fixed human peripheral blood monocytes (PBMs) with anti-C3a-receptor antibody 3G7. Immunofluorescence analysis of paraformaldehyde fixed human PBMs on Shi-fix™ coverslips, permeabilized with 0.15 % Triton and stained with the chimeric rabbit IgG version of 3G7 (ABIN5668215) at 10 µg/mL for 1h followed by Alexa Fluor®488 secondary antibody (1 µg/mL), showing membrane staining. The nuclear stain is DAPI (blue). Panels show from left-right, top-

bottom ABIN5668215, DAPI, merged channels and an isotype control. The isotype control was stained with an anti-Fluorescein antibody followed by Alexa Fluor®488 secondary antibody.