

Datasheet for ABIN5668233

Recombinant anti-CD52 antibody**2** Images[Go to Product page](#)

Overview

Quantity:	200 µg
Target:	CD52
Reactivity:	Human, Rhesus Monkey, Cynomolgus
Host:	Rabbit
Antibody Type:	Recombinant Antibody
Clonality:	Chimeric
Application:	Flow Cytometry (FACS), Western Blotting (WB), Immunohistochemistry (Paraffin-embedded Sections) (IHC (p)), ELISA, Immunohistochemistry (Frozen Sections) (IHC (fro)), Cytotoxicity Test (CyTox), In vivo Studies (in vivo)

Product Details

Immunogen:	Human lymphocytes.
Clone:	Campath-1H
Isotype:	IgG kappa
Specificity:	Human CD52 antigen, also known as CAMPATH-1. CD52 is expressed at high density by lymphocytes, monocytes, eosinophils, thymocytes and macrophages. It is expressed by most lymphoid derived malignancies, although expression on myeloma cells is variable.
Cross-Reactivity:	Cynomolgus, Rhesus Monkey
Characteristics:	OriginalSpeciesName: Human OriginalFormat: IgG1
Purification:	Purified antibody.

Target Details

Target:	CD52
Alternative Name:	CD52 (CD52 Products)
Background:	CDW52, Cambridge pathology 1 antigen, Epididymal secretory protein E5, Human epididymis-specific protein 5, YTH66.9HL, Alemtuzumab
UniProt:	P31358

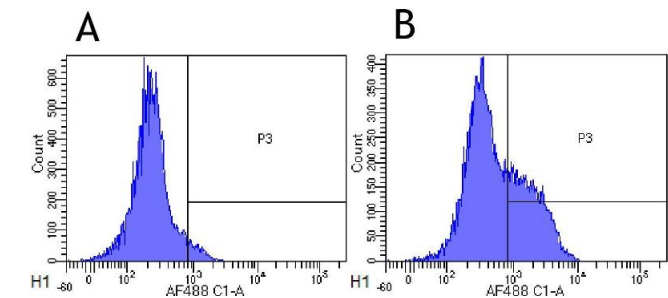
Application Details

Application Notes:	Optimal working dilution should be determined by the investigator.
Comment:	This chimeric rabbit antibody was made using the variable domain sequences of the original Human IgG1 format, for improved compatibility with existing reagents, assays and techniques.
Restrictions:	For Research Use only

Handling

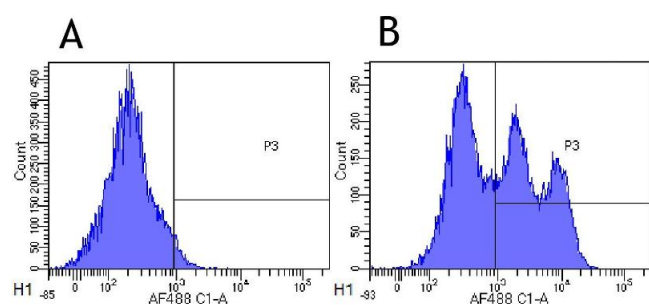
Buffer:	PBS with 0.02 % Proclin 300.
Preservative:	ProClin
Precaution of Use:	This product contains ProClin: a POISONOUS AND HAZARDOUS SUBSTANCE which should be handled by trained staff only.
Storage:	4 °C,-20 °C
Storage Comment:	Store at 4°C for up to 3 months. For longer storage, aliquot and store at -20°C.

Images



Flow Cytometry

Image 1. Flow-cytometry using anti-CD52 antibody Campath-1H Rhesus monkey lymphocytes were stained with an isotype control (panel A) or the rabbit-chimeric version of Campath-1H (panel B) at a concentration of 1 µg/ml for 30 mins at RT. After washing, bound antibody was detected using a AF488 conjugated donkey anti-rabbit antibody (ab150073) and cells analysed on a FACSCanto flow-cytometer.



Flow Cytometry

Image 2. Flow-cytometry using anti-CD52 antibody Campath-1H. Cynomolgus monkey lymphocytes were stained with an isotype control (panel A) or the rabbit-chimeric version of Campath-1H (-23.0, panel B) at a concentration of 1 $\mu\text{g/ml}$ for 30 mins at RT. After washing, bound antibody was detected using a AF488 conjugated donkey anti-rabbit antibody (ab150073) and cells analysed on a FACSCanto flow-cytometer.