

Datasheet for ABIN5668238

Recombinant anti-CD40 antibody**3** Images[Go to Product page](#)

Overview

Quantity:	200 µg
Target:	CD40
Reactivity:	Human
Host:	Rabbit
Antibody Type:	Recombinant Antibody
Clonality:	Chimeric
Application:	Flow Cytometry (FACS), Immunohistochemistry (IHC), Immunoprecipitation (IP), Activation (Act)

Product Details

Immunogen:	Human erythrocyte-rosette-negative tonsillar lymphocytes.
Clone:	G28-5
Isotype:	IgG kappa
Specificity:	48 kD Type I glycoprotein, a member of the TNFR superfamily primarily expressed on normal or malignant B cells or B cell lines, macrophages, follicular dendritic cells, endothelial cells, fibroblasts, and at low levels on plasma cells.
Characteristics:	OriginalSpeciesName: Mouse OriginalFormat: IgG1
Purification:	Purified antibody.

Target Details

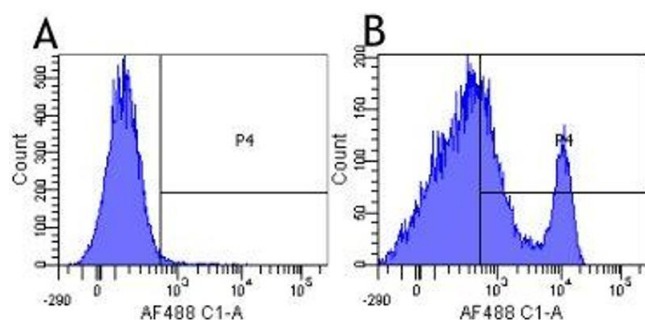
Target:	CD40
Alternative Name:	CD40 (CD40 Products)
Background:	TNFRS5, Tumor necrosis factor receptor superfamily member 5, B-cell surface antigen CD40, Bp50, CD40L receptor CDw40, CD154R
UniProt:	P25942
Pathways:	NF-kappaB Signaling , Cellular Response to Molecule of Bacterial Origin , M Phase , Regulation of Leukocyte Mediated Immunity , Positive Regulation of Immune Effector Process , Production of Molecular Mediator of Immune Response , Cancer Immune Checkpoints

Application Details

Application Notes:	This antibody detects CD40 by immunostaining. The original mouse IgG1 format was shown to stimular B-cells (Bishop 2012 and references therein).
Comment:	This chimeric rabbit antibody was made using the variable domain sequences of the original murine IgG1 format, for improved compatibility with existing reagents, assays and techniques.
Restrictions:	For Research Use only

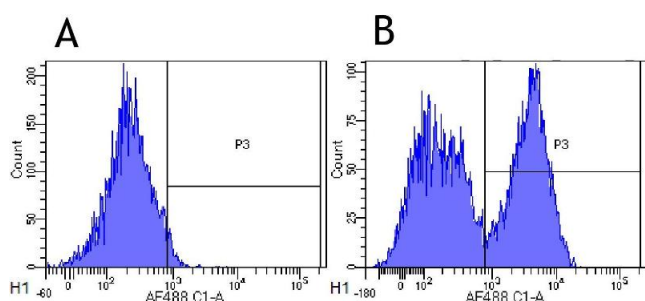
Handling

Buffer:	PBS with 0.02 % Proclin 300.
Preservative:	ProClin
Precaution of Use:	This product contains ProClin: a POISONOUS AND HAZARDOUS SUBSTANCE which should be handled by trained staff only.
Storage:	4 °C, -20 °C
Storage Comment:	Store at 4°C for up to 3 months. For longer storage, aliquot and store at -20°C.



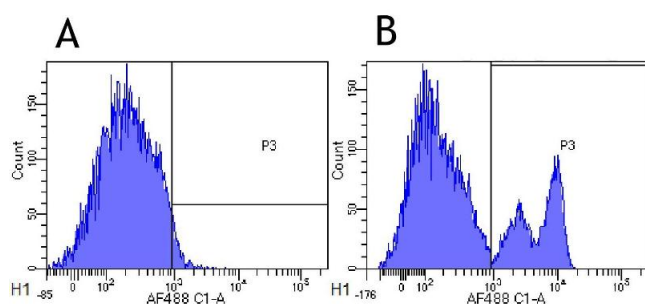
Flow Cytometry

Image 1. Flow-cytometry using anti-CD40 antibody G28.5 Human lymphocytes were stained with an isotype control (panel A) or the rabbit-chimeric version of G28.5 (panel B) at a concentration of 1 µg/ml for 30 mins at RT. After washing, bound antibody was detected using a AF488 conjugated donkey anti-rabbit antibody (ab150073) and cells analysed on a FACSCanto flow-cytometer.



Flow Cytometry

Image 2. Flow-cytometry using anti-CD40 antibody G28.5 Rhesus monkey lymphocytes were stained with an isotype control (panel A) or the rabbit-chimeric version of G28.5 (panel B) at a concentration of 1 µg/ml for 30 mins at RT. After washing, bound antibody was detected using a AF488 conjugated donkey anti-rabbit antibody (ab150073) and cells analysed on a FACSCanto flow-cytometer.



Flow Cytometry

Image 3. Flow-cytometry using anti-CD40 antibody G28.5 Cynomolgus monkey lymphocytes were stained with an isotype control (panel A) or the rabbit-chimeric version of G28.5 (panel B) at a concentration of 1 µg/ml for 30 mins at RT. After washing, bound antibody was detected using a AF488 conjugated donkey anti-rabbit antibody (ab150073) and cells analysed on a FACSCanto flow-cytometer.