



[Go to Product page](#)

Datasheet for ABIN566824
anti-TAF1L antibody (AA 1532-1641)

3 Images

Overview

Quantity:	100 µg
Target:	TAF1L
Binding Specificity:	AA 1532-1641
Reactivity:	Human
Host:	Mouse
Clonality:	Monoclonal
Conjugate:	This TAF1L antibody is un-conjugated
Application:	ELISA, Western Blotting (WB), Immunohistochemistry (Paraffin-embedded Sections) (IHC (p))

Product Details

Purpose:	Mouse monoclonal antibody raised against a partial recombinant TAF1L.
Immunogen:	TAF1L (NP_722516, 1532 a.a. ~ 1641 a.a) partial recombinant protein with GST tag. MW of the GST tag alone is 26 KDa.
Sequence:	NIVTQKMMAV PDSWPFHHPV NKKFVPDYK MIVNPVDLET IRKNISKHKY QSRESFLDDV NLILANSVKY NGPESQYTKT AQEIVNICYQ TITEYDEHLT QLEKDICTAK
Clone:	1E12
Isotype:	IgG2a
Cross-Reactivity:	Human
Characteristics:	Antibody Reactive Against Recombinant Protein.

Target Details

Target:	TAF1L
Alternative Name:	TAF1L (TAF1L Products)
Background:	Full Gene Name: TAF1 RNA polymerase II, TATA box binding protein (TBP)-associated factor, 210 kDa-like Synonyms: MGC134910,TAF2A2
Gene ID:	138474
NCBI Accession:	NM_153809

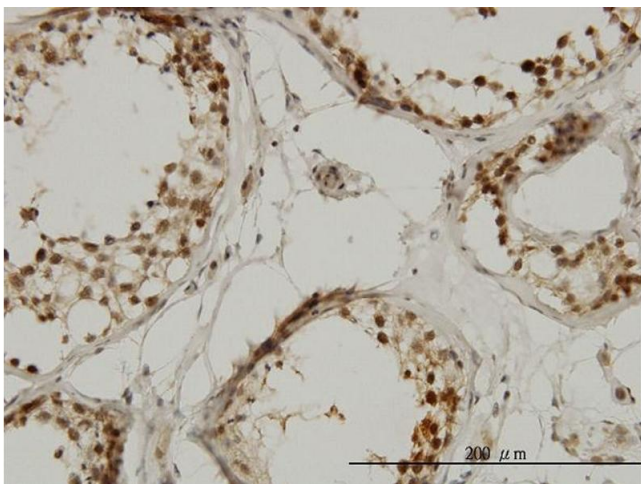
Application Details

Application Notes:	Optimal working dilution should be determined by the investigator.
Restrictions:	For Research Use only

Handling

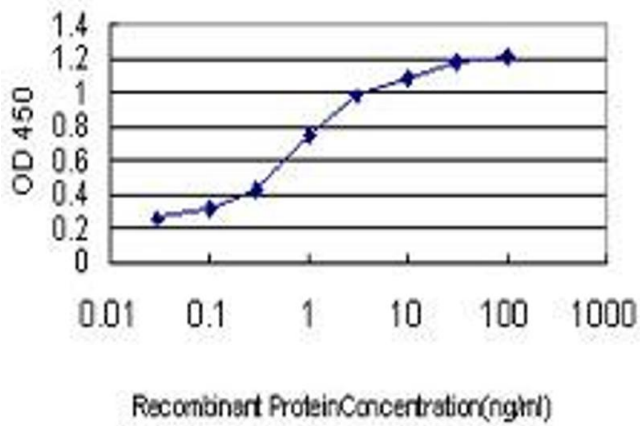
Buffer:	In 1x PBS, pH 7.4
Handling Advice:	Aliquot to avoid repeated freezing and thawing.
Storage:	-20 °C
Storage Comment:	Store at -20°C or lower. Aliquot to avoid repeated freezing and thawing.

Images



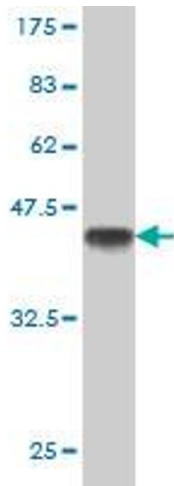
Immunostaining

Image 1. Immunoperoxidase of monoclonal antibody to TAF1L on formalin-fixed paraffin-embedded human testis. [antibody concentration 1 ug/ml]



ELISA

Image 2. Detection limit for recombinant GST tagged TAF1L is approximately 0.03ng/ml as a capture antibody.



Western Blotting

Image 3. Western Blot detection against Immunogen (37.84 KDa).