

Datasheet for ABIN5668278

**Recombinant anti-CEACAM5 (Arcitumomab Biosimilar)
antibody**[Go to Product page](#)**2** Images

Overview

Quantity:	200 µg
Target:	CEACAM5 (Arcitumomab Biosimilar)
Reactivity:	Human
Host:	Human
Antibody Type:	Recombinant Antibody
Clonality:	Monoclonal
Conjugate:	This CEACAM5 (Arcitumomab Biosimilar) antibody is un-conjugated
Application:	Flow Cytometry (FACS), Immunohistochemistry (Paraffin-embedded Sections) (IHC (p)), BioImaging (BI)

Product Details

Immunogen:	Carcinoembryonic antigen (CEA) describes a set of highly related glycoproteins involved in cell adhesion normally produced in gastrointestinal tissue during fetal development, but only at very low levels in adults.
Isotype:	IgG1 kappa
Specificity:	Recognises human carcinoembryonic antigen.
Characteristics:	OriginalSpeciesName: Mouse OriginalFormat: Fab'
Purification:	Purified antibody.
Purity:	> 98 % as determined by SDS-PAGE

Product Details

Endotoxin Level: Endotoxin is < 1.0 EU/mg as determined by the LAL method

Target Details

Target: CEACAM5 (Arcitumomab Biosimilar)

Abstract: [CEACAM5 \(Arcitumomab Biosimilar\) Products](#)

Background: CEA

UniProt: [Q13984](#)

Application Details

Application Notes: This antibody binds to carcinoembryonic antigen and was used in the diagnosis of mammary carcinomas.

Comment: NOT FOR THERAPEUTIC USE - This is a research-grade biosimilar.

Restrictions: For Research Use only

Handling

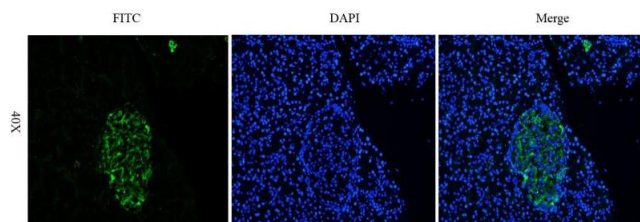
Buffer: PBS with 0.02 % Proclin 300.

Preservative: ProClin

Precaution of Use: This product contains ProClin: a POISONOUS AND HAZARDOUS SUBSTANCE which should be handled by trained staff only.

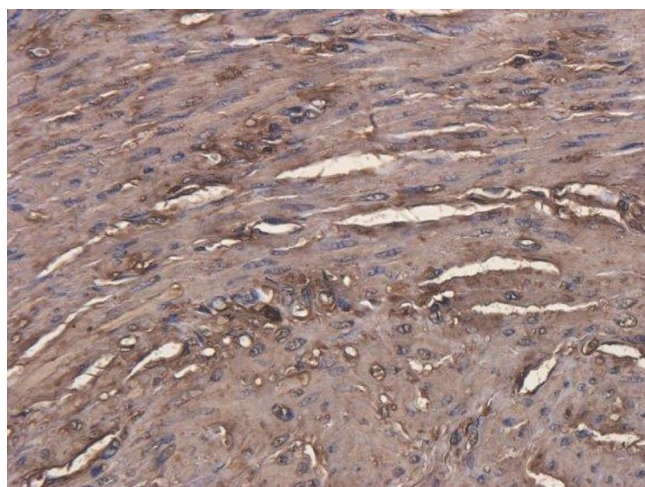
Storage: 4 °C,-20 °C

Storage Comment: Store at 4°C for up to 3 months. For longer storage, aliquot and store at -20°C.



Immunofluorescence

Image 1. Immunofluorescent staining of rat pancreas using anti-CEA antibody. Formaldehyde-fixed rat pancreas slices were stained with at 5 $\mu\text{g}/\text{ml}$ and detected with a FITC-conjugated secondary antibody. shows cross-reactivity with rat.



Immunohistochemistry

Image 2. Immunohistochemical staining of human endometrial cancer using anti-CEA antibody. Formalin fixed human endometrial cancer slices were stained with a at 5 $\mu\text{g}/\text{ml}$.