



Datasheet for ABIN566838  
**anti-DYDC1 antibody (AA 1-177)**



[Go to Product page](#)

3 Images

Overview

Quantity:	100 µg
Target:	DYDC1
Binding Specificity:	AA 1-177
Reactivity:	Human
Host:	Mouse
Clonality:	Monoclonal
Conjugate:	This DYDC1 antibody is un-conjugated
Application:	ELISA, Western Blotting (WB), Immunofluorescence (IF)

Product Details

Purpose:	Mouse monoclonal antibody raised against a full length recombinant LOC143241.
Immunogen:	LOC143241 (AAH19250, 1 a.a. ~ 177 a.a) full-length recombinant protein with GST tag. MW of the GST tag alone is 26 KDa.
Sequence:	MESIYLQKHL GACLTQGLAE VARVRPVDPI EYLALWIYKY KENVTMEQLR QKEMAKLERE RELALMEQEM MERLKAEELL LQQQLALQL ELEMQEKERQ RIQELQRAQE QLGKEMRMNM ENLVRNEDIL HSEEATLDSG KTLAEISDRY GAPNLSRVEE LDEPMFSDIA LNIDQDL
Clone:	1B11
Isotype:	IgG2b
Cross-Reactivity:	Human
Characteristics:	Antibody Reactive Against Recombinant Protein.

## Target Details

Target:	DYDC1
Alternative Name:	DYDC1 ( <a href="#">DYDC1 Products</a> )
Background:	Full Gene Name: DPY30 domain containing 1 Synonyms: DPY30D1,FLJ43920,bA36D19.5
Gene ID:	143241

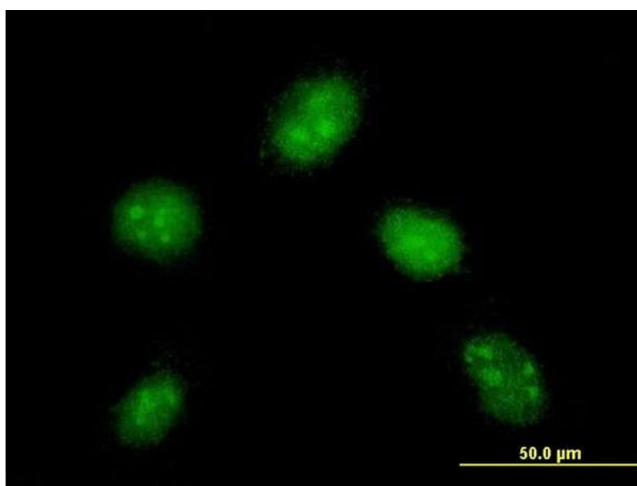
## Application Details

Application Notes:	Optimal working dilution should be determined by the investigator.
Restrictions:	For Research Use only

## Handling

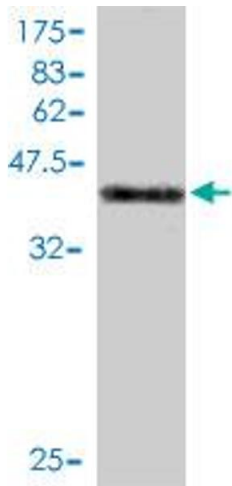
Buffer:	In 1x PBS, pH 7.4
Handling Advice:	Aliquot to avoid repeated freezing and thawing.
Storage:	-20 °C
Storage Comment:	Store at -20°C or lower. Aliquot to avoid repeated freezing and thawing.

## Images



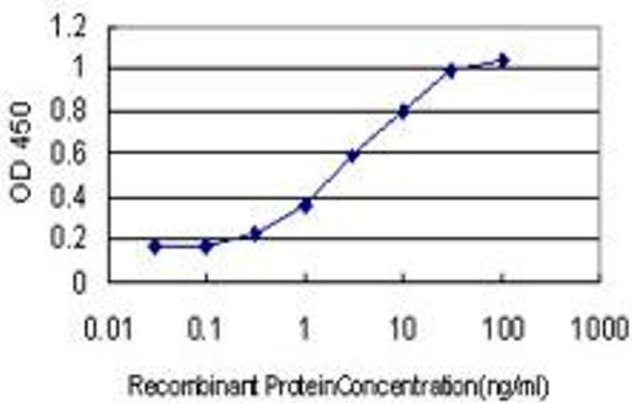
### Immunofluorescence

**Image 1.** Immunofluorescence of monoclonal antibody to DYDC1 on HeLa cell. [antibody concentration 10 ug/ml]



### Western Blotting

**Image 2.** Western Blot detection against Immunogen (45.21 kDa).



### ELISA

**Image 3.** Detection limit for recombinant GST tagged DYDC1 is approximately 0.1ng/ml as a capture antibody.