



Datasheet for ABIN566840
anti-CACUL1 antibody (AA 111-210)



[Go to Product page](#)

4 Images

Overview

Quantity:	50 µL
Target:	CACUL1
Binding Specificity:	AA 111-210
Reactivity:	Human
Host:	Mouse
Clonality:	Polyclonal
Conjugate:	This CACUL1 antibody is un-conjugated
Application:	Western Blotting (WB), ELISA

Product Details

Purpose:	Mouse polyclonal antibody raised against a partial recombinant C10orf46.
Immunogen:	C10orf46 (NP_722517, 111 a.a. ~ 210 a.a) partial recombinant protein with GST tag.
Sequence:	STININTSTS KFLMNVTIE DYKSTYWPKL DGAIDQLLTQ SPGDYIPISY EQIYSCVYKC VCQQHSEQMY SDLIKKITNH LERVSKELQA SPPDLYIERF
Cross-Reactivity:	Human, Mouse, Rat
Characteristics:	Antibody Reactive Against Recombinant Protein.

Target Details

Target:	CACUL1
Alternative Name:	C10orf46 (CACUL1 Products)

Target Details

Background:	Full Gene Name: chromosome 10 open reading frame 46 Synonyms: FLJ40409,MGC33215
Gene ID:	143384
NCBI Accession:	NM_153810

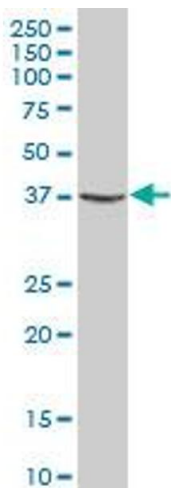
Application Details

Application Notes:	Optimal working dilution should be determined by the investigator.
Restrictions:	For Research Use only

Handling

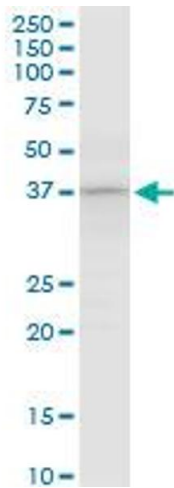
Format:	Liquid
Buffer:	50 % glycerol
Handling Advice:	Aliquot to avoid repeated freezing and thawing.
Storage:	-20 °C
Storage Comment:	Store at -20°C or lower. Aliquot to avoid repeated freezing and thawing.

Images



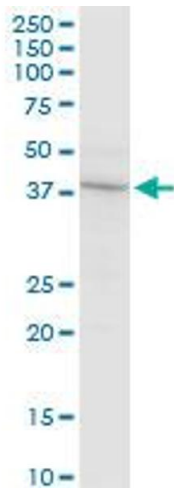
Western Blotting

Image 1. C10orf46 polyclonal antibody (A01), Lot # ABNOVA060710QCS1 Western Blot analysis of C10orf46 expression in NIH/3T3 .



Western Blotting

Image 2. C10orf46 polyclonal antibody (A01), Lot # ABNOVA060710QCS1. Western Blot analysis of C10orf46 expression in PC-12.



Western Blotting

Image 3. C10orf46 polyclonal antibody (A01), Lot # ABNOVA060710QCS1. Western Blot analysis of C10orf46 expression in Raw 264.7.

Please check the [product details page](#) for more images. Overall 4 images are available for ABIN566840.