

Datasheet for ABIN566851
anti-CREB3L4 antibody (AA 1-110)

5 Images

[Go to Product page](#)

Overview

Quantity:	100 µg
Target:	CREB3L4
Binding Specificity:	AA 1-110
Reactivity:	Human
Host:	Mouse
Clonality:	Monoclonal
Conjugate:	This CREB3L4 antibody is un-conjugated
Application:	ELISA, Western Blotting (WB), Immunofluorescence (IF), Proximity Ligation Assay (PLA), RNA Interference (RNAi)

Product Details

Purpose:	Mouse monoclonal antibody raised against a partial recombinant CREB3L4.
Immunogen:	CREB3L4 (NP_570968, 1 a.a. ~ 110 a.a) partial recombinant protein with GST tag. MW of the GST tag alone is 26 KDa.
Sequence:	MDLGIPDLLD AWLEPPEDIF STGSLVLELGL HCPPPEVPVT RLQEQLQGW KSGGDRGCGL QESEPEDFLK LFIDPNEVYC SEASPGSDSG ISEDPCHPDS PPAPRATSSP
Clone:	3E3
Isotype:	IgG2a
Cross-Reactivity:	Human
Characteristics:	Antibody Reactive Against Recombinant Protein.

Target Details

Target:	CREB3L4
Alternative Name:	CREB3L4 (CREB3L4 Products)
Background:	Full Gene Name: cAMP responsive element binding protein 3-like 4 Synonyms: AIBZIP,ATCE1,CREB3,CREB4,JAL,hJAL
Gene ID:	148327
NCBI Accession:	NM_130898
Pathways:	Thyroid Hormone Synthesis

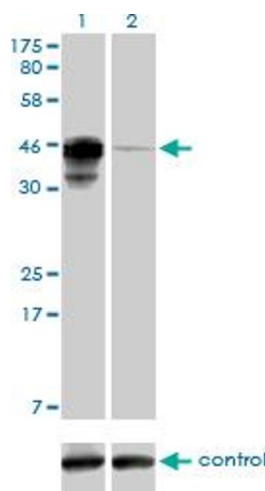
Application Details

Application Notes:	Optimal working dilution should be determined by the investigator.
Restrictions:	For Research Use only

Handling

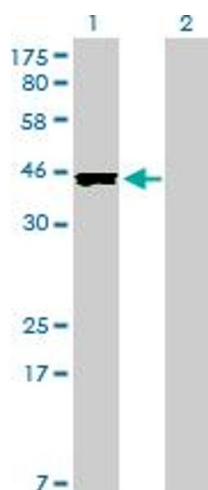
Buffer:	In 1x PBS, pH 7.4
Handling Advice:	Aliquot to avoid repeated freezing and thawing.
Storage:	-20 °C
Storage Comment:	Store at -20°C or lower. Aliquot to avoid repeated freezing and thawing.

Images



Western Blotting

Image 1. Western blot analysis of CREB3L4 over-expressed 293 cell line, cotransfected with CREB3L4 Validated Chimera RNAi (Lane 2) or non-transfected control (Lane 1). Blot probed with CREB3L4 monoclonal antibody (M01), clone 3E3. GAPDH (36.1 kDa) used as specificity and loading control.

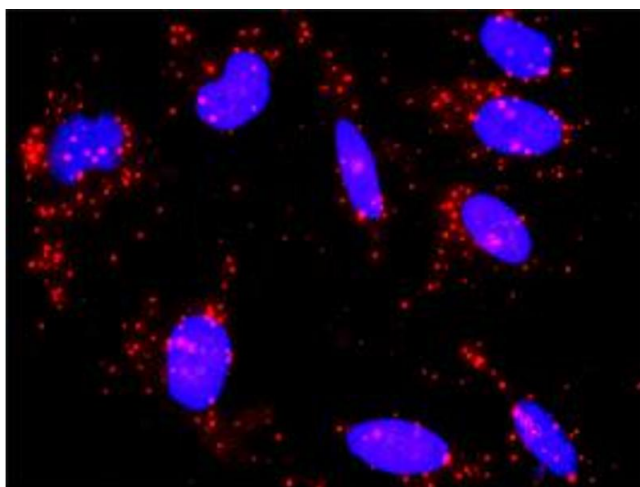


Western Blotting

Image 2. Western Blot analysis of CREB3L4 expression in transfected 293T cell line by CREB3L4 monoclonal antibody (M01), clone 3E3.

Lane 1: CREB3L4 transfected lysate(43.4 KDa).

Lane 2: Non-transfected lysate.



Proximity Ligation Assay

Image 3. Proximity Ligation Analysis of protein-protein interactions between CREB3 and CREB3L4. HeLa cells were stained with anti-CREB3 rabbit purified polyclonal 1:1200 and anti-CREB3L4 mouse monoclonal antibody 1:50. Each red dot represents the detection of protein-protein interaction complex, and nuclei were counterstained with DAPI (blue).

Please check the [product details page](#) for more images. Overall 5 images are available for ABIN566851.