



[Go to Product page](#)

Datasheet for ABIN566880

anti-PPP1R2P3 antibody (AA 1-205)

4 Images

Overview

Quantity:	50 µg
Target:	PPP1R2P3
Binding Specificity:	AA 1-205
Reactivity:	Human
Host:	Mouse
Clonality:	Monoclonal
Conjugate:	This PPP1R2P3 antibody is un-conjugated
Application:	ELISA, Western Blotting (WB), Immunohistochemistry (Paraffin-embedded Sections) (IHC (p))

Product Details

Purpose:	Mouse monoclonal antibody raised against a full length recombinant PPP1R2P3.
Immunogen:	PPP1R2P3 (AAH66922, 1 a.a. ~ 205 a.a) full-length recombinant protein with GST tag. MW of the GST tag alone is 26 KDa.
Sequence:	MAASTASHRP IKGILKNKTS TTSSMVASAE QPRRSVDEEL SKKSQKWDEI NILATYHPAD KGYGLMKIDE PSPPYHSMMG DDEDACRDTE TTEAMAPGIL AKKLAAAEGE EPKYRIQEQE SSGEEDSDLS PEEREKKRQF EMRRKLHYNE GLNIKLARQL ISKDLHDDDE DEEMLETADG ESMNTEESNQ GSTPSDQQQN KLRSS
Clone:	2G11
Isotype:	IgG1
Cross-Reactivity:	Human

Product Details

Characteristics: Antibody Reactive Against Recombinant Protein.

Target Details

Target: PPP1R2P3

Alternative Name: PPP1R2P3 ([PPP1R2P3 Products](#))

Background: Full Gene Name: protein phosphatase 1, regulatory (inhibitor) subunit 2 pseudogene 3
Synonyms: MGC87149

Gene ID: 153743

Application Details

Application Notes: Optimal working dilution should be determined by the investigator.

Restrictions: For Research Use only

Handling

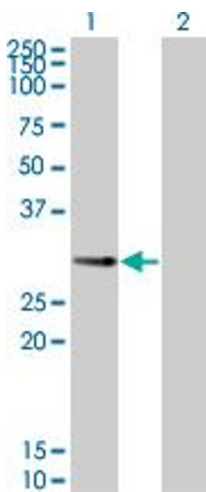
Buffer: In 1x PBS, pH 7.4

Handling Advice: Aliquot to avoid repeated freezing and thawing.

Storage: -20 °C

Storage Comment: Store at -20°C or lower. Aliquot to avoid repeated freezing and thawing.

Images

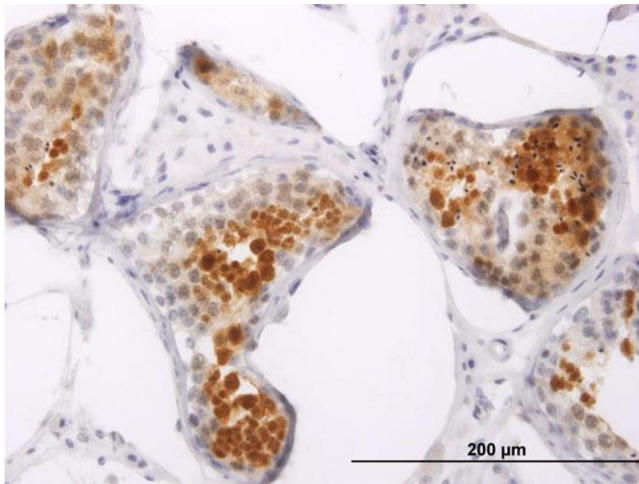


Western Blotting

Image 1. Western Blot analysis of PPP1R2P3 expression in transfected 293T cell line by PPP1R2P3 monoclonal antibody (M01), clone 2G11.

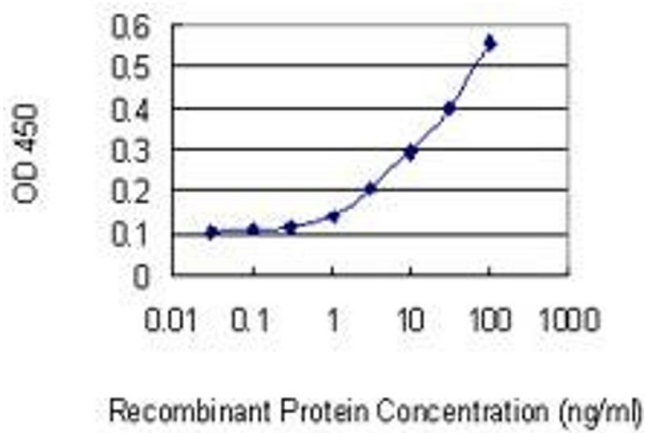
Lane 1: PPP1R2P3 transfected lysate(23 KDa).

Lane 2: Non-transfected lysate.



Immunostaining

Image 2. Immunoperoxidase of monoclonal antibody to PPP1R2P3 on formalin-fixed paraffin-embedded human testis. [antibody concentration 3 µg/ml]



ELISA

Image 3. Detection limit for recombinant GST tagged PPP1R2P3 is 0.3 ng/ml as a capture antibody.

Please check the [product details page](#) for more images. Overall 4 images are available for ABIN566880.