



[Go to Product page](#)

Datasheet for ABIN566903  
**anti-LONRF2 antibody (AA 1-108)**

1 Image

Overview

Quantity:	100 µg
Target:	LONRF2
Binding Specificity:	AA 1-108
Reactivity:	Human
Host:	Mouse
Clonality:	Monoclonal
Conjugate:	This LONRF2 antibody is un-conjugated
Application:	ELISA

Product Details

Purpose:	Mouse monoclonal antibody raised against a partial recombinant LONRF2.
Immunogen:	LONRF2 (NP_940863, 1 a.a. ~ 108 a.a) partial recombinant protein with GST tag. MW of the GST tag alone is 26 KDa.
Sequence:	MKNYEALQD ASAACQNEPL LIKGHQVKAQ ALSGLGRSKE VLKEFLYCLA LNPECNSVKK EAQKVMCEVL FSATANVHEN LTSSIQSRLK AQGHSHMNAQ ALLEEGDA
Clone:	1C7
Isotype:	IgG2a
Cross-Reactivity:	Human
Characteristics:	Antibody Reactive Against Recombinant Protein.

## Target Details

Target:	LONRF2
Alternative Name:	LONRF2 ( <a href="#">LONRF2 Products</a> )
Background:	Full Gene Name: LON peptidase N-terminal domain and ring finger 2 Synonyms: FLJ45273,MGC126711,MGC126713,RNF192
Gene ID:	164832
NCBI Accession:	<a href="#">NM_198461</a>

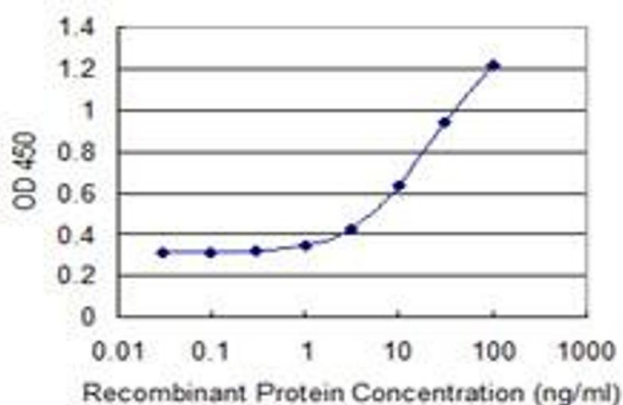
## Application Details

Application Notes:	Optimal working dilution should be determined by the investigator.
Restrictions:	For Research Use only

## Handling

Buffer:	In 1x PBS, pH 7.4
Handling Advice:	Aliquot to avoid repeated freezing and thawing.
Storage:	-20 °C
Storage Comment:	Store at -20°C or lower. Aliquot to avoid repeated freezing and thawing.

## Images



### ELISA

**Image 1.** Detection limit for recombinant GST tagged LONRF2 is 0.3 ng/ml as a capture antibody.