

Datasheet for ABIN566931
anti-MLKL antibody (AA 371-471)



[Go to Product page](#)

1 Image

Overview

Quantity:	50 µL
Target:	MLKL
Binding Specificity:	AA 371-471
Reactivity:	Human
Host:	Mouse
Clonality:	Polyclonal
Conjugate:	This MLKL antibody is un-conjugated
Application:	Western Blotting (WB), ELISA

Product Details

Purpose:	Mouse polyclonal antibody raised against a partial recombinant MLKL.
Immunogen:	MLKL (NP_689862, 371 a.a. ~ 471 a.a) partial recombinant protein with GST tag.
Sequence:	VKSTAYLSPQ ELEDVFYQYD VKSEIYSFGI VLWEIATGDI PFQGCNSEKI RKLVAVKRQQ EPLGEDCPSE LREIIDECRA HDPSVRPSVD EILKKLSTFS K
Cross-Reactivity:	Human
Characteristics:	Antibody Reactive Against Recombinant Protein.

Target Details

Target:	MLKL
Alternative Name:	MLKL (MLKL Products)

Target Details

Background: Full Gene Name: mixed lineage kinase domain-like
Synonyms: FLJ34389

Gene ID: 197259

NCBI Accession: [NM_152649](#)

Application Details

Application Notes: Optimal working dilution should be determined by the investigator.

Restrictions: For Research Use only

Handling

Format: Liquid

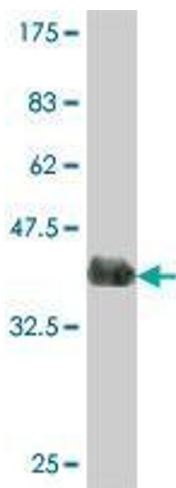
Buffer: 50 % glycerol

Handling Advice: Aliquot to avoid repeated freezing and thawing.

Storage: -20 °C

Storage Comment: Store at -20°C or lower. Aliquot to avoid repeated freezing and thawing.

Images



Western Blotting

Image 1. Western Blot detection against Immunogen (37.22 KDa) .