



[Go to Product page](#)

Datasheet for ABIN566943  
**anti-LASS3 antibody (AA 57-134)**

1 Image

### Overview

Quantity:	50 µL
Target:	LASS3 (CERS3)
Binding Specificity:	AA 57-134
Reactivity:	Human
Host:	Mouse
Clonality:	Polyclonal
Conjugate:	This LASS3 antibody is un-conjugated
Application:	ELISA, Western Blotting (WB)

### Product Details

Purpose:	Mouse polyclonal antibody raised against a partial recombinant LASS3.
Immunogen:	LASS3 (NP_849164, 57 a.a. ~ 134 a.a) partial recombinant protein with GST tag.
Sequence:	EKFVASPLAK SFGIKETVRK VTPNTVLENF FKHSTRQPLQ TDIYGLAKKC NLTERQVERW FRSRRNQERP SRLKKFQE
Cross-Reactivity:	Human
Characteristics:	Antibody Reactive Against Recombinant Protein.

### Target Details

Target:	LASS3 (CERS3)
Alternative Name:	LASS3 ( <a href="#">CERS3 Products</a> )

## Target Details

Background:	Full Gene Name: LAG1 homolog, ceramide synthase 3 Synonyms: CerS3,MGC27091
Gene ID:	204219
NCBI Accession:	<a href="#">NM_178842</a>

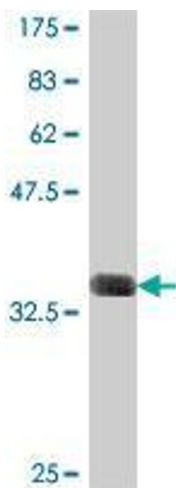
## Application Details

Application Notes:	Optimal working dilution should be determined by the investigator.
Restrictions:	For Research Use only

## Handling

Format:	Liquid
Buffer:	50 % glycerol
Handling Advice:	Aliquot to avoid repeated freezing and thawing.
Storage:	-20 °C
Storage Comment:	Store at -20°C or lower. Aliquot to avoid repeated freezing and thawing.

## Images



### Western Blotting

**Image 1.** Western Blot detection against Immunogen (34.69 KDa) .