



[Go to Product page](#)

Datasheet for ABIN566950  
**anti-JMJD1C antibody (AA 2-99)**

3 Images

Overview

Quantity:	100 µg
Target:	JMJD1C
Binding Specificity:	AA 2-99
Reactivity:	Human
Host:	Mouse
Clonality:	Monoclonal
Conjugate:	This JMJD1C antibody is un-conjugated
Application:	ELISA, Western Blotting (WB), Immunohistochemistry (Paraffin-embedded Sections) (IHC (p))

Product Details

Purpose:	Mouse monoclonal antibody raised against a partial recombinant JMJD1C.
Immunogen:	JMJD1C (NP_004232, 2 a.a. ~ 99 a.a) partial recombinant protein with GST tag. MW of the GST tag alone is 26 KDa.
Sequence:	IVMNDQVLEP QNVDPSMVQM TFLDDVVHSL LKGENIGITS RRRSRANQNV NAVHSHYTRA QANSPRPAMN SQAAVPKQNT HQQQQQRSIR PNKRKGS
Clone:	5F12
Isotype:	IgG2a
Cross-Reactivity:	Human
Characteristics:	Antibody Reactive Against Recombinant Protein.

## Target Details

Target:	JMJD1C
Alternative Name:	JMJD1C ( <a href="#">JMJD1C Products</a> )
Background:	Full Gene Name: jumonji domain containing 1C Synonyms: DKFZp761F0118,FLJ14374,KIAA1380,RP11-10C13.2,TRIP8
Gene ID:	221037
NCBI Accession:	<a href="#">NM_004241</a>
Pathways:	<a href="#">Nuclear Hormone Receptor Binding</a>

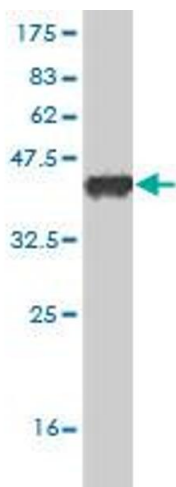
## Application Details

Application Notes:	Optimal working dilution should be determined by the investigator.
Restrictions:	For Research Use only

## Handling

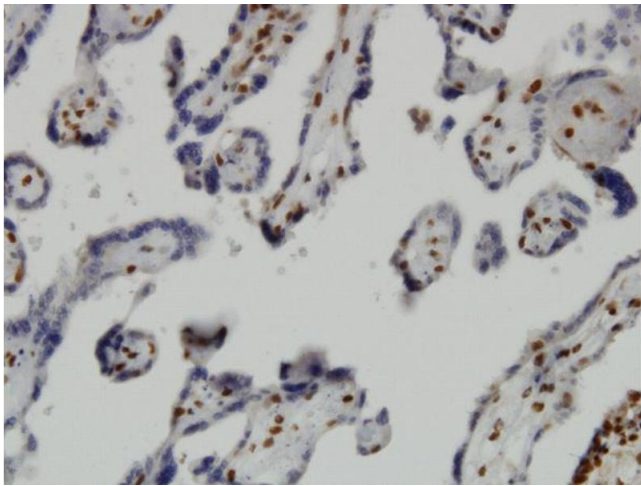
Buffer:	In 1x PBS, pH 7.4
Handling Advice:	Aliquot to avoid repeated freezing and thawing.
Storage:	-20 °C
Storage Comment:	Store at -20°C or lower. Aliquot to avoid repeated freezing and thawing.

## Images



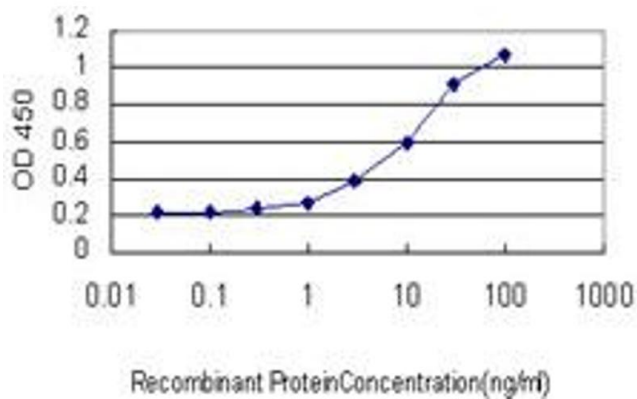
### Western Blotting

**Image 1.** Western Blot detection against Immunogen (36.52 KDa) .



### Immunostaining

**Image 2.** Immunoperoxidase of monoclonal antibody to JMJD1C on formalin-fixed paraffin-embedded human placenta. [antibody concentration 3 ug/ml]



### ELISA

**Image 3.** Detection limit for recombinant GST tagged JMJD1C is approximately 0.3ng/ml as a capture antibody.