



[Go to Product page](#)

Datasheet for ABIN566962

## anti-SCUBE3 antibody (AA 401-499)

1 Image

1 Publication

### Overview

Quantity:	50 µL
Target:	SCUBE3
Binding Specificity:	AA 401-499
Reactivity:	Human
Host:	Mouse
Clonality:	Polyclonal
Conjugate:	This SCUBE3 antibody is un-conjugated
Application:	Western Blotting (WB), ELISA

### Product Details

Purpose:	Mouse polyclonal antibody raised against a partial recombinant SCUBE3.
Immunogen:	SCUBE3 (NP_689966, 401 a.a. ~ 499 a.a) partial recombinant protein with GST tag.
Sequence:	LKCQGSPGAS KAMLSNRSRGG KKDTCAITCP SRARFLPESE NGFTVSCGTP SPRAAPARAG HNGNSTNSNH CHEAAVLSIK QRASFNIKDA KCRLHLRNK
Cross-Reactivity:	Human
Characteristics:	Antibody Reactive Against Recombinant Protein.

### Target Details

Target:	SCUBE3
Alternative Name:	SCUBE3 ( <a href="#">SCUBE3 Products</a> )

## Target Details

---

Background:	Full Gene Name: signal peptide, CUB domain, EGF-like 3 Synonyms: CEGF3,DKFZp686B09105,DKFZp686B1223,DKFZp686D20108,FLJ34743
Gene ID:	222663
NCBI Accession:	<a href="#">NM_152753</a>

## Application Details

---

Application Notes:	Optimal working dilution should be determined by the investigator.
Restrictions:	For Research Use only

## Handling

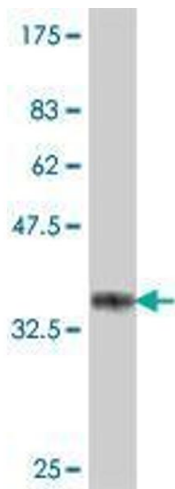
---

Format:	Liquid
Buffer:	50 % glycerol
Handling Advice:	Aliquot to avoid repeated freezing and thawing.
Storage:	-20 °C
Storage Comment:	Store at -20°C or lower. Aliquot to avoid repeated freezing and thawing.

## Publications

---

Product cited in:	Xavier, Panousopoulos, Cobourne: "Scube3 is expressed in multiple tissues during development but is dispensable for embryonic survival in the mouse." in: <b>PLoS ONE</b> , Vol. 8, Issue 1, pp. e55274, (2013) ( <a href="#">PubMed</a> ).
-------------------	---



### Western Blotting

**Image 1.** Western Blot detection against Immunogen (37 kDa) .