



Datasheet for ABIN566965
anti-ATP6V0D2 antibody (AA 238-306)



[Go to Product page](#)

2 Images

Overview

Quantity:	50 µL
Target:	ATP6V0D2
Binding Specificity:	AA 238-306
Reactivity:	Human
Host:	Mouse
Clonality:	Polyclonal
Conjugate:	This ATP6V0D2 antibody is un-conjugated
Application:	Western Blotting (WB), ELISA

Product Details

Purpose:	Mouse polyclonal antibody raised against a partial recombinant ATP6V0D2.
Immunogen:	ATP6V0D2 (NP_689778, 238 a.a. ~ 306 a.a) partial recombinant protein with GST tag.
Sequence:	ETLYPTFGKL YPEGLRLLAQ AEDFDQMKNV ADHYGVYKPL FEAVGGSGGK TLEDVFYERE VQMNVLAFN
Cross-Reactivity:	Human
Characteristics:	Antibody Reactive Against Recombinant Protein.

Target Details

Target:	ATP6V0D2
Alternative Name:	ATP6V0D2 (ATP6V0D2 Products)

Target Details

Background:	Full Gene Name: ATPase, H ⁺ transporting, lysosomal 38 kDa, V0 subunit d2 Synonyms: ATP6D2,FLJ38708,VMA6
Gene ID:	245972
NCBI Accession:	NM_152565
Pathways:	Transition Metal Ion Homeostasis , Proton Transport

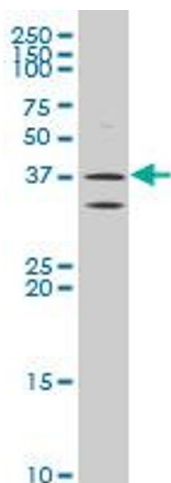
Application Details

Application Notes:	Optimal working dilution should be determined by the investigator.
Restrictions:	For Research Use only

Handling

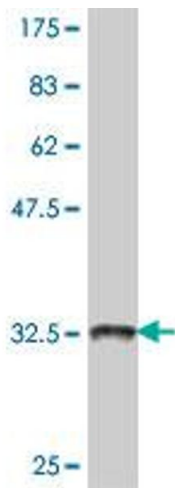
Format:	Liquid
Buffer:	50 % glycerol
Handling Advice:	Aliquot to avoid repeated freezing and thawing.
Storage:	-20 °C
Storage Comment:	Store at -20°C or lower. Aliquot to avoid repeated freezing and thawing.

Images



Western Blotting

Image 1. ATP6V0D2 polyclonal antibody (A01), Lot # 051130JC01 Western Blot analysis of ATP6V0D2 expression in Y-79 .



Western Blotting

Image 2. Western Blot detection against Immunogen (33.7 kDa).