



Datasheet for ABIN566970

anti-Ribonuclease H1 antibody (AA 189-286)



[Go to Product page](#)

1 Image

Overview

Quantity:	50 µL
Target:	Ribonuclease H1 (RNASEH1)
Binding Specificity:	AA 189-286
Reactivity:	Human
Host:	Mouse
Clonality:	Polyclonal
Conjugate:	This Ribonuclease H1 antibody is un-conjugated
Application:	Western Blotting (WB), ELISA

Product Details

Purpose:	Mouse polyclonal antibody raised against a partial recombinant RNASEH1.
Immunogen:	RNASEH1 (NP_002927, 189 a.a. ~ 286 a.a) partial recombinant protein with GST tag.
Sequence:	AACKAIEQAK TQNINKLVLY TDSMFTINGI TNWVQGWKKN GWKTSAGKEV INKEDFVALE RLTQGMDIQW MHVPGHSGFI GNEEADRLAR EGAKQSED
Cross-Reactivity:	Human
Characteristics:	Antibody Reactive Against Recombinant Protein.

Target Details

Target:	Ribonuclease H1 (RNASEH1)
Alternative Name:	RNASEH1 (RNASEH1 Products)

Target Details

Background: Full Gene Name: ribonuclease H1
Synonyms: H1RNA

Gene ID: 246243

NCBI Accession: [NM_002936](#)

Application Details

Application Notes: Optimal working dilution should be determined by the investigator.

Restrictions: For Research Use only

Handling

Format: Liquid

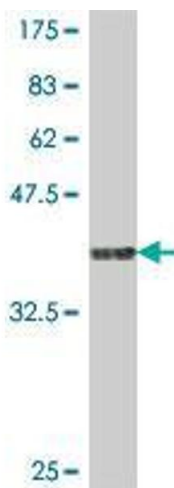
Buffer: 50 % glycerol

Handling Advice: Aliquot to avoid repeated freezing and thawing.

Storage: -20 °C

Storage Comment: Store at -20°C or lower. Aliquot to avoid repeated freezing and thawing.

Images



Western Blotting

Image 1. Western Blot detection against Immunogen (36.89 KDa) .