



[Go to Product page](#)

Datasheet for ABIN566981
anti-KCTD13 antibody (AA 24-119)

1 Image

Overview

Quantity:	50 µL
Target:	KCTD13
Binding Specificity:	AA 24-119
Reactivity:	Human
Host:	Mouse
Clonality:	Polyclonal
Conjugate:	This KCTD13 antibody is un-conjugated
Application:	Western Blotting (WB), ELISA

Product Details

Purpose:	Mouse polyclonal antibody raised against a partial recombinant KCTD13.
Immunogen:	KCTD13 (NP_849194, 24 a.a. ~ 119 a.a) partial recombinant protein with GST tag.
Sequence:	LEPGPAAYGL KPLTPNSKYV KLVNKGSLHY TTLRLTLGQD TMLKAMFSGR VEVLTDAGGW VLIDRSGRHF GTILNYLRDG SVPLPESTRE LGELLG
Cross-Reactivity:	Human
Characteristics:	Antibody Reactive Against Recombinant Protein.

Target Details

Target:	KCTD13
Alternative Name:	KCTD13 (KCTD13 Products)

Target Details

Background:	Full Gene Name: potassium channel tetramerisation domain containing 13 Synonyms: FKSG86,PDIP1,POLDIP1
Gene ID:	253980
NCBI Accession:	NM_178863

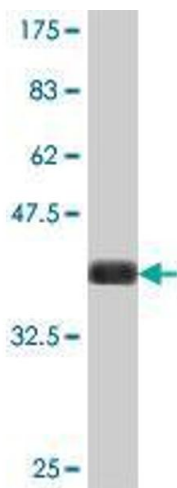
Application Details

Application Notes:	Optimal working dilution should be determined by the investigator.
Restrictions:	For Research Use only

Handling

Format:	Liquid
Buffer:	50 % glycerol
Handling Advice:	Aliquot to avoid repeated freezing and thawing.
Storage:	-20 °C
Storage Comment:	Store at -20°C or lower. Aliquot to avoid repeated freezing and thawing.

Images



Western Blotting

Image 1. Western Blot detection against Immunogen (36.67 kDa).