



[Go to Product page](#)

Datasheet for ABIN566998

## anti-GAS2L3 antibody (AA 595-694)

2 Images

1 Publication

### Overview

Quantity:	100 µg
Target:	GAS2L3
Binding Specificity:	AA 595-694
Reactivity:	Human
Host:	Mouse
Clonality:	Monoclonal
Conjugate:	This GAS2L3 antibody is un-conjugated
Application:	Western Blotting (WB), ELISA

### Product Details

Purpose:	Mouse monoclonal antibody raised against a partial recombinant GAS2L3.
Immunogen:	GAS2L3 (AAH43366, 595 a.a. ~ 694 a.a) partial recombinant protein with GST tag. MW of the GST tag alone is 26 KDa.
Sequence:	SAFQKTGPSS LKSPGRTPLS IVSLPQSSTK TQTAPKSAQT VAKSQHSTKG PPRSGKTPAS IRKPPSSVKD ADSGDKKPTA KKKEDDDHYF VMTGSKKPRK
Clone:	1D4
Isotype:	IgG1
Cross-Reactivity:	Human
Characteristics:	Antibody Reactive Against Recombinant Protein.

## Target Details

---

Target:	GAS2L3
Alternative Name:	GAS2L3 ( <a href="#">GAS2L3 Products</a> )
Background:	Full Gene Name: growth arrest-specific 2 like 3 Synonyms:
Gene ID:	283431

## Application Details

---

Application Notes:	Optimal working dilution should be determined by the investigator.
Restrictions:	For Research Use only

## Handling

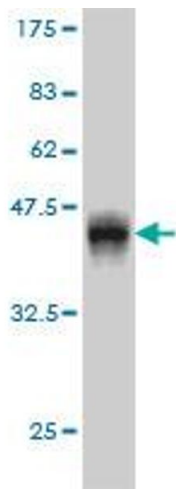
---

Buffer:	In 1x PBS, pH 7.4
Handling Advice:	Aliquot to avoid repeated freezing and thawing.
Storage:	-20 °C
Storage Comment:	Store at -20°C or lower. Aliquot to avoid repeated freezing and thawing.

## Publications

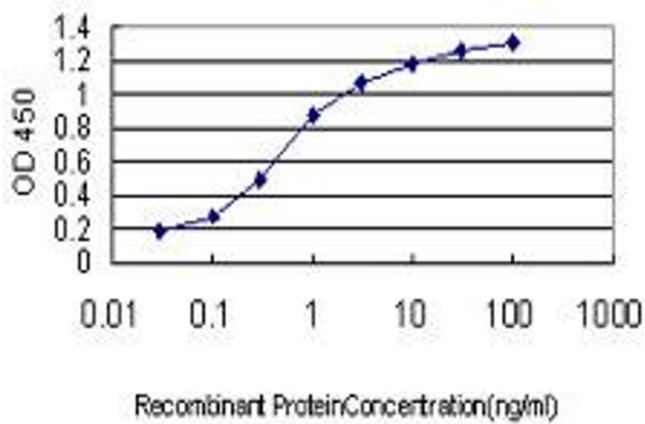
---

Product cited in:	Wolter, Schmitt, Fackler, Kremling, Probst, Hauser, Gruss, Gaubatz: "GAS2L3, a target gene of the DREAM complex, is required for proper cytokinesis and genomic stability." in: <b>Journal of cell science</b> , Vol. 125, Issue Pt 10, pp. 2393-406, (2012) ( <a href="#">PubMed</a> ).
-------------------	--



### Western Blotting

**Image 1.** Western Blot detection against Immunogen (36.63 KDa) .



### ELISA

**Image 2.** Detection limit for recombinant GST tagged GAS2L3 is approximately 0.03ng/ml as a capture antibody.