



[Go to Product page](#)

Datasheet for ABIN567009
anti-FBXL22 antibody (AA 1-110)

1 Image

Overview

Quantity:	50 µg
Target:	FBXL22
Binding Specificity:	AA 1-110
Reactivity:	Human
Host:	Mouse
Clonality:	Monoclonal
Conjugate:	This FBXL22 antibody is un-conjugated
Application:	ELISA, Immunofluorescence (IF)

Product Details

Purpose:	Mouse monoclonal antibody raised against a partial recombinant FBXL22.
Immunogen:	FBXL22 (NP_976307, 1 a.a. ~ 110 a.a) partial recombinant protein with GST tag. MW of the GST tag alone is 26 KDa.
Sequence:	MHITQLNREC LLHLFSFLDK DSRKSLARTC SQLHDVFE DP ALWSLLHF RS LTELQKDNFL LGPALRSLSI CWHSSRVQVC SIEDWLKSAF QRSICSRHES LVNDFLLRVC
Clone:	1B6
Isotype:	IgG2a
Cross-Reactivity:	Human
Characteristics:	Antibody Reactive Against Recombinant Protein.

Target Details

Target:	FBXL22
Alternative Name:	FBXL22 (FBXL22 Products)
Background:	Full Gene Name: F-box and leucine-rich repeat protein 22 Synonyms: FLJ39626,Fbl22,MGC75496
Gene ID:	283807
NCBI Accession:	NM_203373

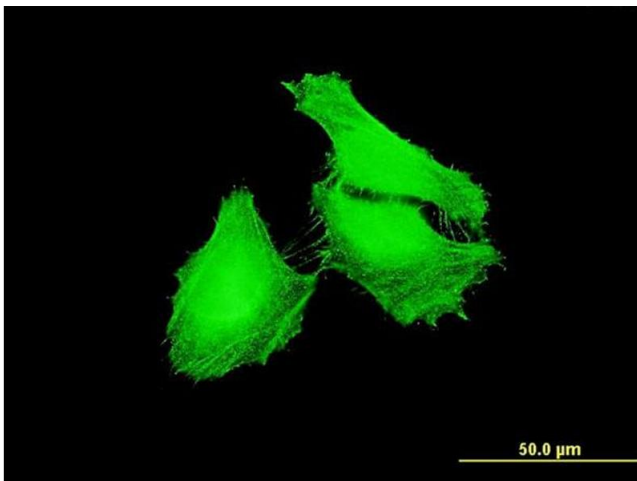
Application Details

Application Notes:	Optimal working dilution should be determined by the investigator.
Restrictions:	For Research Use only

Handling

Buffer:	In 1x PBS, pH 7.4
Handling Advice:	Aliquot to avoid repeated freezing and thawing.
Storage:	-20 °C
Storage Comment:	Store at -20°C or lower. Aliquot to avoid repeated freezing and thawing.

Images



Immunofluorescence

Image 1. Immunofluorescence of monoclonal antibody to FBXL22 on HeLa cell. [antibody concentration 10 ug/ml]