



[Go to Product page](#)

Datasheet for ABIN567033
anti-NRBP2 antibody (AA 151-258)

4 Images

Overview

Quantity:	100 µg
Target:	NRBP2
Binding Specificity:	AA 151-258
Reactivity:	Human
Host:	Mouse
Clonality:	Monoclonal
Conjugate:	This NRBP2 antibody is un-conjugated
Application:	ELISA, Western Blotting (WB), RNA Interference (RNAi)

Product Details

Purpose:	Mouse monoclonal antibody raised against a partial recombinant NRBP2.
Immunogen:	NRBP2 (NP_848659, 151 a.a. ~ 258 a.a) partial recombinant protein with GST tag. MW of the GST tag alone is 26 KDa.
Sequence:	PRVLAPPPEE VQKAKTPTPE PFDSETRKVI QMQCNLERSE DKARWHLTLL LVLEDRLHRQ LTYDLLPTDS AQDLASELVH YGFLHEDDRM KLAAFLESTF LKYRGTQA
Clone:	4D1
Isotype:	IgG2b
Cross-Reactivity:	Human
Characteristics:	Antibody Reactive Against Recombinant Protein.

Target Details

Target:	NRBP2
Alternative Name:	NRBP2 (NRBP2 Products)
Background:	Full Gene Name: nuclear receptor binding protein 2 Synonyms: DKFZp434P086,MGC138699,TRG16,pp9320
Gene ID:	340371
NCBI Accession:	NM_178564

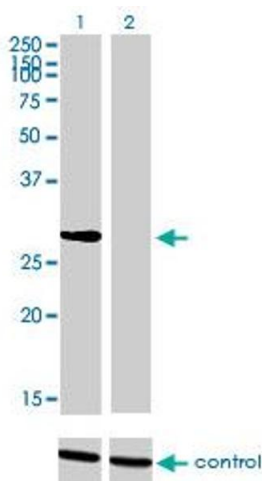
Application Details

Application Notes:	Optimal working dilution should be determined by the investigator.
Restrictions:	For Research Use only

Handling

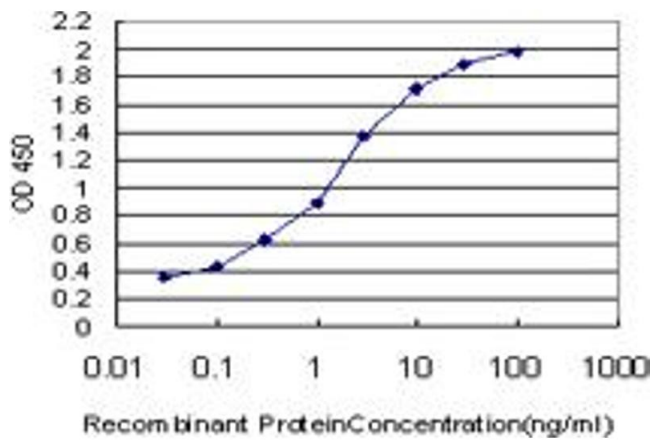
Buffer:	In 1x PBS, pH 7.4
Handling Advice:	Aliquot to avoid repeated freezing and thawing.
Storage:	-20 °C
Storage Comment:	Store at -20°C or lower. Aliquot to avoid repeated freezing and thawing.

Images



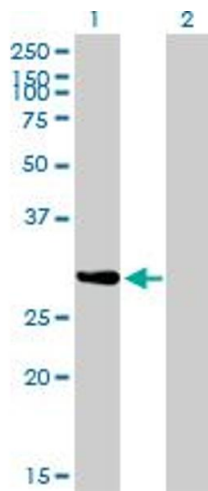
Western Blotting

Image 1. Western blot analysis of NRBP2 over-expressed 293 cell line, cotransfected with NRBP2 Validated Chimera RNAi (Lane 2) or non-transfected control (Lane 1). Blot probed with NRBP2 monoclonal antibody (M01), clone 4D1. GAPDH (36.1 kDa) used as specificity and loading control.



ELISA

Image 2. Detection limit for recombinant GST tagged NRBP2 is approximately 0.03ng/ml as a capture antibody.



Western Blotting

Image 3. Western Blot analysis of NRBP2 expression in transfected 293T cell line by NRBP2 monoclonal antibody (M01), clone 4D1.

Lane 1: NRBP2 transfected lysate(29.9 kDa).

Lane 2: Non-transfected lysate.

Please check the [product details page](#) for more images. Overall 4 images are available for ABIN567033.