



[Go to Product page](#)

Datasheet for ABIN567056  
**anti-NOTCH2NL antibody (AA 1-236)**

4 Images

Overview

Quantity:	100 µg
Target:	NOTCH2NL
Binding Specificity:	AA 1-236
Reactivity:	Human
Host:	Mouse
Clonality:	Monoclonal
Conjugate:	This NOTCH2NL antibody is un-conjugated
Application:	Western Blotting (WB), ELISA, Immunofluorescence (IF)

Product Details

Purpose:	Mouse monoclonal antibody raised against a full length recombinant NOTCH2NL.
Immunogen:	NOTCH2NL (AAH19835, 1 a.a. ~ 236 a.a) full-length recombinant protein with GST tag. MW of the GST tag alone is 26 KDa.
Sequence:	MCVTYHNGTG YCKCPEGFLG EYCQHRDPCE KNRCQNGGTC VAQAMLGKAT CRCASGFTGE DCQYSTSHPC FVSRPCLNGG TCHMLSRDTY ECTCQVGFTG KECQWTDACL SHPCANGSTC TTVANQFSCK CLTGFTGQKC ETDVNECDIP GHCQHGGICL NLPGSYQCQC LQGFTGQYCD SLYVPCAPSP CVNGGTCRQT GDFTFECNCL PETVRRGTEL WERDREVVNG KEHDEN
Clone:	2G12-2A5
Isotype:	IgG1
Cross-Reactivity:	Human

## Product Details

---

Characteristics: Antibody Reactive Against Recombinant Protein.

## Target Details

---

Target: NOTCH2NL

Alternative Name: NOTCH2NL ([NOTCH2NL Products](#))

Background: Full Gene Name: Notch homolog 2 (Drosophila) N-terminal like  
Synonyms: N2N

Gene ID: 388677

## Application Details

---

Application Notes: Optimal working dilution should be determined by the investigator.

Restrictions: For Research Use only

## Handling

---

Buffer: In 1x PBS, pH 7.4

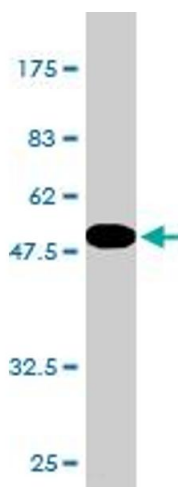
Handling Advice: Aliquot to avoid repeated freezing and thawing.

Storage: -20 °C

Storage Comment: Store at -20°C or lower. Aliquot to avoid repeated freezing and thawing.

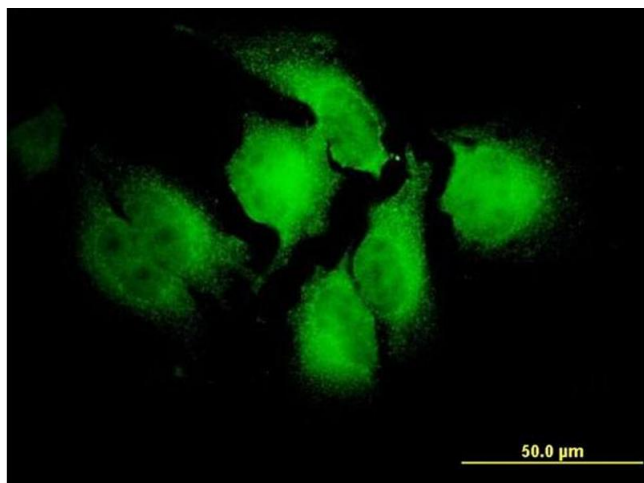
## Images

---



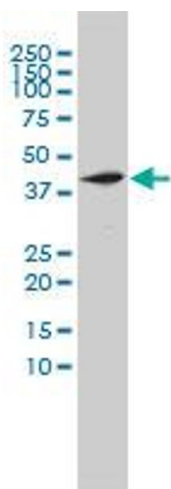
### Western Blotting

**Image 1.** Western Blot detection against Immunogen (51.7 KDa) .



### Immunofluorescence

**Image 2.** Immunofluorescence of monoclonal antibody to NOTCH2NL on HeLa cell. [antibody concentration 10 ug/ml]



### Western Blotting

**Image 3.** NOTCH2NL monoclonal antibody (M01), clone 2G12-2A5 Western Blot analysis of NOTCH2NL expression in HL-60 .

Please check the [product details page](#) for more images. Overall 4 images are available for ABIN567056.