



[Go to Product page](#)

Datasheet for ABIN567071
anti-RFPL4B antibody (AA 127-226)

2 Images

Overview

Quantity:	50 µL
Target:	RFPL4B
Binding Specificity:	AA 127-226
Reactivity:	Human
Host:	Mouse
Clonality:	Polyclonal
Conjugate:	This RFPL4B antibody is un-conjugated
Application:	ELISA, Western Blotting (WB)

Product Details

Purpose:	Mouse polyclonal antibody raised against a partial recombinant RFPL4B.
Immunogen:	RFPL4B (NP_001013756, 127 a.a. ~ 226 a.a) partial recombinant protein with GST tag.
Sequence:	TKDPRLACVL GTPCFSSGQH YWEVEVGEVK SWSLGVCKEP ADRKSNDLFP GHGFWISMKA GAIHANTHLE RIPASPRLRR VGIFLDADLE EIQFFDVDNN
Cross-Reactivity:	Human
Characteristics:	Antibody Reactive Against Recombinant Protein.

Target Details

Target:	RFPL4B
Alternative Name:	RFPL4B (RFPL4B Products)

Target Details

Background:	Full Gene Name: ret finger protein-like 4B Synonyms: RNF211
Gene ID:	442247
NCBI Accession:	NM_001013734

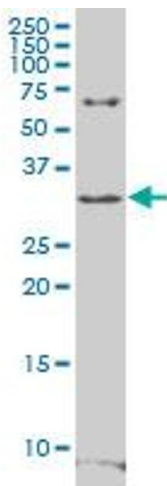
Application Details

Application Notes:	Optimal working dilution should be determined by the investigator.
Restrictions:	For Research Use only

Handling

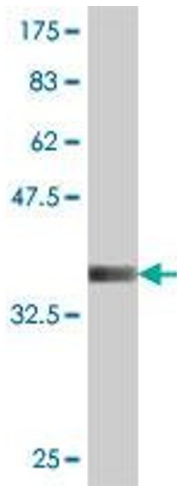
Format:	Liquid
Buffer:	50 % glycerol
Handling Advice:	Aliquot to avoid repeated freezing and thawing.
Storage:	-20 °C
Storage Comment:	Store at -20°C or lower. Aliquot to avoid repeated freezing and thawing.

Images



Western Blotting

Image 1. RFPL4B polyclonal antibody (A01), Lot # 060703JCS1. Western Blot analysis of LOC442247 expression in Daoy.



Western Blotting

Image 2. Western Blot detection against Immunogen (37.11 kDa).