



[Go to Product page](#)

Datasheet for ABIN5671229

anti-PEG antibody (methoxylated) (Biotin)

3 Images

Overview

Quantity:	50 µg
Target:	PEG
Binding Specificity:	methoxylated
Reactivity:	All Species
Host:	Rabbit
Clonality:	Monoclonal
Conjugate:	This PEG antibody is conjugated to Biotin
Application:	ELISA, Western Blotting (WB), Immunocytochemistry (ICC), Immunohistochemistry (IHC), Immunoprecipitation (IP), Flow Cytometry (FACS)

Product Details

Immunogen:	KLH-PEG with terminal methoxy group
Clone:	RM105
Isotype:	IgG
Specificity:	This antibody reacts to the methoxy group of Polyethylene glycol (PEG). It is specific for methoxypoly(ethylene glycol).
Purification:	Protein A affinity purified from an animal origin-free culture supernatant

Target Details

Target:	PEG
---------	-----

Target Details

Alternative Name: PEG (methoxy group) ([PEG Products](#))

Application Details

Application Notes: Optimal working dilution should be determined by the investigator.

- ELISA: 0.02 ug/mL-0.5 ug/mL
- Immunohistochemistry (IHC): 0.5 ug/mL-2 ug/mL
- Western Blot (WB) : 0.1 ug/mL-1 ug/mL.

Restrictions: For Research Use only

Handling

Concentration: 1 mg/mL

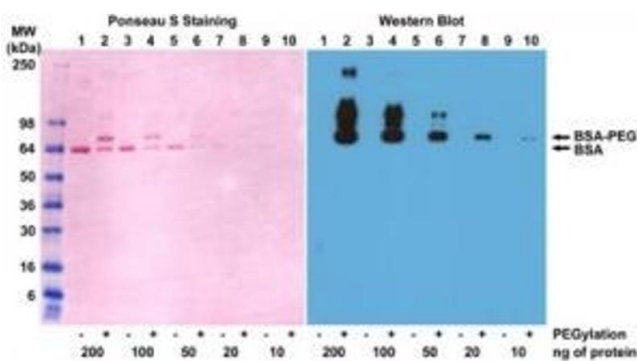
Buffer: 50 % Glycerol/PBS with 1 % BSA and 0.09 % sodium azide

Preservative: Sodium azide

Precaution of Use: This product contains Sodium azide: a POISONOUS AND HAZARDOUS SUBSTANCE which should be handled by trained staff only.

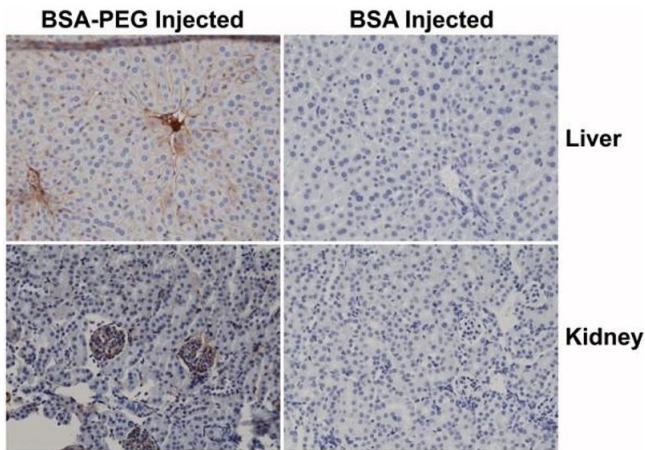
Storage: -20 °C

Images



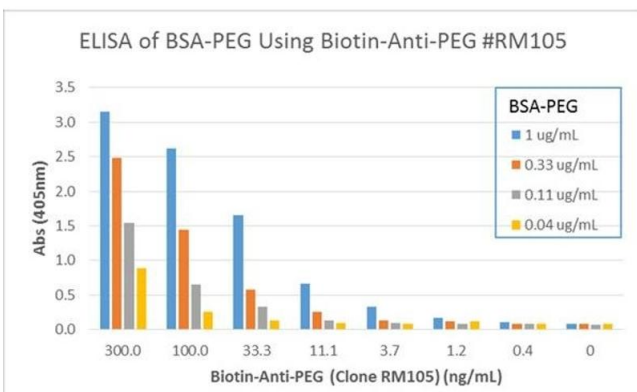
Western Blotting

Image 1. Western blot of BSA and PEGylated BSA (mPEG 5 kDa) using 0.1 ug/mL of anti-PEG clone RM105.



Immunohistochemistry

Image 2. Immunohistochemistry of mouse liver and kidney using 0.5ug/mL of RevMAb anti-PEG Clone RM105 biotin conjugate, followed by an HRP conjugated streptavidin. The mouse was injected with PEG-BSA or BSA 3 hours before sampling.



ELISA

Image 3. ELISA of PEGylated BSA using Biotinylated anti-PEG rabbit monoclonal antibody clone RM105. The ELISA plate was coated with 50 uL/well of BSA-PEG at 1 ug/mL, 0.33 ug/mL, 0.11 ug/mL, and 0.04 ug/mL. Different concentrations of Biotinylated anti-PEG mAb clone RM105 was used as the primary antibody, followed by an AP conjugated Streptavidin.