

Datasheet for ABIN5671373
anti-MP2K7 antibody (C-Term)[Go to Product page](#)

1 Image

Overview

Quantity:	100 µL
Target:	MP2K7 (LOC108911176)
Binding Specificity:	C-Term
Reactivity:	Cow, Dog, Guinea Pig, Horse, Human, Mouse, Rabbit, Rat, Sheep, Zebrafish (Danio rerio)
Host:	Rabbit
Clonality:	Polyclonal
Application:	Western Blotting (WB)

Product Details

Immunogen:	The immunogen is a synthetic peptide directed towards the C-terminal region of Human MP2K7
Sequence:	KDCLTKDHRK RPKYNKLLEH SFIKRYETLE VDVASWFKDV MAKTESPRTS
Predicted Reactivity:	Cow: 100%, Dog: 100%, Guinea Pig: 100%, Horse: 100%, Human: 100%, Mouse: 100%, Rabbit: 100%, Rat: 100%, Sheep: 93%, Zebrafish: 93%
Characteristics:	This is a rabbit polyclonal antibody against MP2K7. It was validated on Western Blot.
Purification:	Affinity purified

Target Details

Target:	MP2K7 (LOC108911176)
Alternative Name:	MP2K7 (LOC108911176 Products)

Target Details

Background: The protein encoded by this gene is a dual specificity protein kinase that belongs to the MAP kinase kinase family. This kinase specifically activates MAPK8/JNK1 and MAPK9/JNK2, and this kinase itself is phosphorylated and activated by MAP kinase kinase kinases including MAP3K1/MEKK1, MAP3K2/MEKK2, MAP3K3/MEKK5, and MAP4K2/GCK. This kinase is involved in the signal transduction mediating the cell responses to proinflammatory cytokines, and environmental stresses. Alternative splicing results in multiple transcript variants.

Alias Symbols: MAP2K7, JNKK2, MEK7, MKK7, PRKMK7, SKK4,

Protein Interaction Partner: MAPK8, MAP3K3, MAP3K2, UBC, FBXO6, MAP3K11, MAPK8IP1, LPXN, VRK2, RPL30, MAPK9, HSP90AA1, ATF4, JUN, WDR6, BCL10, MAP2K4, MAPK1, LRRK2, MAP3K4, MAP3K1, MYC, ELAVL1, ALK, DUSP22, DUSP19, MAPK8IP3, CNKSR1, ZAK, TRIB1, MAPK8IP2, GADD45B, CFLAR, MAP2K7, MAP3K

Protein Size: 462

Gene ID: 5609

Application Details

Application Notes: Optimal working dilution should be determined by the investigator.

Restrictions: For Research Use only

Handling

Format: Liquid

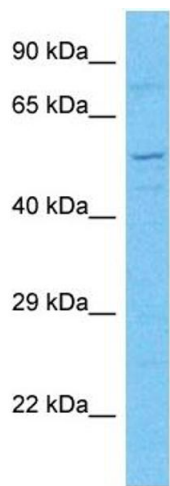
Buffer: Liquid. Purified antibody supplied in 1x PBS buffer with 0.09 % (w/v) sodium azide and 2 % sucrose.

Preservative: Sodium azide

Precaution of Use: This product contains Sodium azide: a POISONOUS AND HAZARDOUS SUBSTANCE which should be handled by trained staff only.

Storage: -20 °C

Storage Comment: For short term use, store at 2-8°C up to 1 week. For long term storage, store at -20°C in small aliquots to prevent freeze-thaw cycles.



Western Blotting

Image 1. Host: Rabbit Target Name: MP2K7 Sample Type: 293T Whole Cell lysates Antibody Dilution: 1.0ug/ml