

Datasheet for ABIN5671380
anti-SLC25A24 antibody (N-Term)[Go to Product page](#)

1 Image

Overview

Quantity:	100 µL
Target:	SLC25A24
Binding Specificity:	N-Term
Reactivity:	Human, Mouse, Rat, Cow, Rabbit, Dog, Guinea Pig, Horse, Zebrafish (Danio rerio), Pig, Saccharomyces cerevisiae
Host:	Rabbit
Clonality:	Polyclonal
Conjugate:	This SLC25A24 antibody is un-conjugated
Application:	Western Blotting (WB)

Product Details

Immunogen:	The immunogen is a synthetic peptide directed towards the N-terminal region of Human SCMC1
Sequence:	LDRNGDGVVD IGELQEGLRN LGIPLGQDAE EKIFTTGDVN KDGKLDFFEF
Predicted Reactivity:	Cow: 100%, Dog: 75%, Guinea Pig: 93%, Horse: 93%, Human: 100%, Mouse: 100%, Pig: 100%, Rabbit: 100%, Rat: 100%, Yeast: 92%, Zebrafish: 83%
Characteristics:	This is a rabbit polyclonal antibody against SCMC1. It was validated on Western Blot.
Purification:	Affinity purified

Target Details

Target:	SLC25A24
---------	----------

Target Details

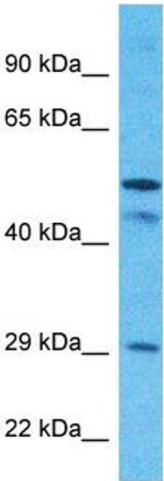
Alternative Name:	SCMC1 (SLC25A24 Products)
Background:	<p>This gene encodes a carrier protein that transports ATP-Mg exchanging it for phosphate.</p> <p>Multiple transcript variants encoding different isoforms have been found for this gene.</p> <p>Alias Symbols: SLC25A24, APC1, MCSC1, SCAMC1,</p> <p>Protein Interaction Partner: UBC, MDM2, PARK2, FBXO6, FAF2, FLOT1, HNRNPM, MPV17, CD55, UBD,</p> <p>Protein Size: 477</p>
Gene ID:	29957
UniProt:	Q6NUK1

Application Details

Application Notes:	Optimal working dilution should be determined by the investigator.
Restrictions:	For Research Use only

Handling

Format:	Liquid
Buffer:	Liquid. Purified antibody supplied in 1x PBS buffer with 0.09 % (w/v) sodium azide and 2 % sucrose.
Preservative:	Sodium azide
Precaution of Use:	This product contains Sodium azide: a POISONOUS AND HAZARDOUS SUBSTANCE which should be handled by trained staff only.
Storage:	-20 °C
Storage Comment:	For short term use, store at 2-8°C up to 1 week. For long term storage, store at -20°C in small aliquots to prevent freeze-thaw cycles.



Western Blotting

Image 1. Host: Rabbit Target Name: SCMC1 Sample Type: MCF7 Whole Cell lysates Antibody Dilution: 1.0ug/ml