



[Go to Product page](#)

Datasheet for ABIN5671388

anti-ZSC12 antibody (N-Term)

1 Image

Overview

Quantity:	100 µL
Target:	ZSC12 (LOC101455890)
Binding Specificity:	N-Term
Reactivity:	Human
Host:	Rabbit
Clonality:	Polyclonal
Conjugate:	This ZSC12 antibody is un-conjugated
Application:	Western Blotting (WB)

Product Details

Immunogen:	The immunogen is a synthetic peptide directed towards the N-terminal region of Human ZSC12
Sequence:	LEVKIEEEKY TTRQDWDLRK NNTHSREVFR QYFRQFCYQE TSGPREALSR
Characteristics:	This is a rabbit polyclonal antibody against ZSC12. It was validated on Western Blot.
Purification:	Affinity purified

Target Details

Target:	ZSC12 (LOC101455890)
Alternative Name:	ZSC12 (LOC101455890 Products)
Background:	ZSC12 may be involved in transcriptional regulation.

Target Details

Alias Symbols: ZSCAN12, KIAA0426, ZNF305, ZNF96,

Protein Interaction Partner: KRTAP10-1, SSX2IP, ZNF496, CEP70, ZKSCAN7, ZSCAN32, ZNF473, TFIP11, MTUS2, MID2, ZSCAN12, SUMO1,

Protein Size: 604

Gene ID: 9753

NCBI Accession: [NP_055539](#)

UniProt: [O43309](#)

Application Details

Application Notes: Optimal working dilution should be determined by the investigator.

Restrictions: For Research Use only

Handling

Format: Liquid

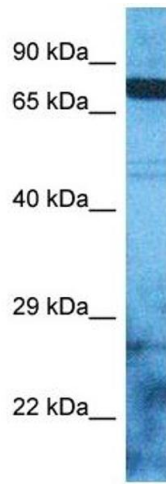
Buffer: Liquid. Purified antibody supplied in 1x PBS buffer with 0.09 % (w/v) sodium azide and 2 % sucrose.

Preservative: Sodium azide

Precaution of Use: This product contains Sodium azide: a POISONOUS AND HAZARDOUS SUBSTANCE which should be handled by trained staff only.

Storage: -20 °C

Storage Comment: For short term use, store at 2-8°C up to 1 week. For long term storage, store at -20°C in small aliquots to prevent freeze-thaw cycles.



Western Blotting

Image 1. Host: Rabbit Target Name: ZSC12 Sample Type: RPMI-8226 Whole Cell lysates Antibody Dilution: 1.0ug/ml