

Datasheet for ABIN5671769
anti-PGRMC1 antibody (C-Term)



[Go to Product page](#)

2 Images

Overview

Quantity:	100 µL
Target:	PGRMC1
Binding Specificity:	C-Term
Reactivity:	Human, Mouse, Rat, Rabbit, Cow, Dog, Horse, Guinea Pig, Zebrafish (Danio rerio)
Host:	Rabbit
Clonality:	Polyclonal
Conjugate:	This PGRMC1 antibody is un-conjugated
Application:	Western Blotting (WB), Immunohistochemistry (IHC)

Product Details

Immunogen:	The immunogen is a synthetic peptide directed towards the C-terminal region of Human PGRC2
Sequence:	SDLNAVQMES VREWEMQFKE KYDYVGRLLK PGEETSEYTD EEDTKDHNKQ
Predicted Reactivity:	Cow: 100%, Dog: 100%, Guinea Pig: 100%, Horse: 100%, Human: 100%, Mouse: 93%, Rabbit: 100%, Rat: 100%, Zebrafish: 86%
Characteristics:	This is a rabbit polyclonal antibody against PGRC2. It was validated on Western Blot.
Purification:	Affinity Purified

Target Details

Target:	PGRMC1
Alternative Name:	PGRC2 (PGRMC1 Products)

Target Details

Background: PGRC2 is a receptor for steroids (Potential).

Alias Symbols: PGRMC2, DG6, PMBP,

Protein Interaction Partner: UBC, LMNA, ABCC1,

Protein Size: 223

Gene ID: 10424

UniProt: [O15173](#)

Application Details

Application Notes: Optimal working dilution should be determined by the investigator.

Restrictions: For Research Use only

Handling

Format: Liquid

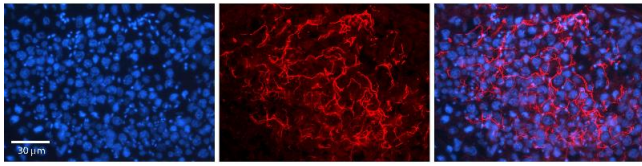
Buffer: Liquid. Purified antibody supplied in 1x PBS buffer with 0.09 % (w/v) sodium azide and 2 % sucrose.

Preservative: Sodium azide

Precaution of Use: This product contains Sodium azide: a POISONOUS AND HAZARDOUS SUBSTANCE which should be handled by trained staff only.

Storage: -20 °C

Storage Comment: For short term use, store at 2-8°C up to 1 week. For long term storage, store at -20°C in small aliquots to prevent freeze-thaw cycles.



Immunohistochemistry

Image 1. Rabbit Anti-PGRC2 Antibody Formalin Fixed Paraffin Embedded Tissue: Human Testis Tissue Observed Staining: Plasma membrane in spermatozoa Primary Antibody Concentration: 1:100 Other Working Concentrations: 1:600 Secondary Antibody: Donkey anti-Rabbit-Cy3 Secondary Antibody Concentration: 1:200 Magnification: 20X Exposure Time: 0.5 - 2.0 sec



Western Blotting

Image 2. Host: Rabbit Target Name: PGRC2 Sample Type: Fetal Lung lysates Antibody Dilution: 1ug/ml