

Datasheet for ABIN5673100
anti-GLYT1 antibody (Middle Region)



[Go to Product page](#)

1 Image

Overview

Quantity:	100 µL
Target:	GLYT1
Binding Specificity:	Middle Region
Reactivity:	Human, Rat, Mouse, Dog, Guinea Pig, Rabbit, Cow, Horse, Zebrafish (Danio rerio)
Host:	Rabbit
Clonality:	Polyclonal
Application:	Western Blotting (WB)

Product Details

Immunogen:	The immunogen is a synthetic peptide directed towards the middle region of Human SC6A9
Sequence:	WLVVFLCLIR GVKSSGKVY FTATFPYVVL TILFVRGVTL EGAFDGIMYY
Predicted Reactivity:	Cow: 100%, Dog: 100%, Guinea Pig: 100%, Horse: 100%, Human: 100%, Mouse: 100%, Rabbit: 100%, Rat: 100%, Zebrafish: 100%
Characteristics:	This is a rabbit polyclonal antibody against SC6A9. It was validated on Western Blot.
Purification:	Affinity purified

Target Details

Target:	GLYT1
Alternative Name:	SC6A9 (GLYT1 Products)
Background:	SC6A9 terminates the action of glycine by its high affinity sodium-dependent reuptake into

Target Details

presynaptic terminals. It may play a role in regulation of glycine levels in NMDA receptor-mediated neurotransmission.

Alias Symbols: SLC6A9,

Protein Interaction Partner: UBC, GABRR1, STX1A, PRKCA,

Protein Size: 706

Gene ID: 6536

NCBI Accession: [NP_964012](#)

UniProt: [P48067](#)

Application Details

Application Notes: Optimal working dilution should be determined by the investigator.

Restrictions: For Research Use only

Handling

Format: Liquid

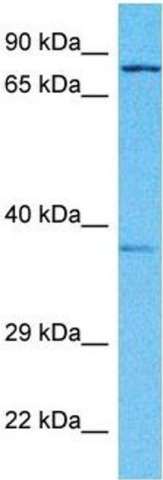
Buffer: Liquid. Purified antibody supplied in 1x PBS buffer with 0.09 % (w/v) sodium azide and 2 % sucrose.

Preservative: Sodium azide

Precaution of Use: This product contains Sodium azide: a POISONOUS AND HAZARDOUS SUBSTANCE which should be handled by trained staff only.

Storage: -20 °C

Storage Comment: For short term use, store at 2-8°C up to 1 week. For long term storage, store at -20°C in small aliquots to prevent freeze-thaw cycles.



Western Blotting

Image 1. Host: Rabbit Target Name: SC6A9 Sample Type: Fetal Lung lysates Antibody Dilution: 1.0ug/ml