



Datasheet for ABIN5674654
LAIR1 Protein (AA 22-165) (Fc Tag)



[Go to Product page](#)

2 Images

Overview

Quantity:	100 µg
Target:	LAIR1
Protein Characteristics:	AA 22-165
Origin:	Rhesus Monkey
Source:	HEK-293 Cells
Protein Type:	Recombinant
Purification tag / Conjugate:	This LAIR1 protein is labelled with Fc Tag.

Product Details

Sequence:	AA 22-165
Characteristics:	This protein carries a mouse IgG2a Fc tag at the C-terminus. The protein has a calculated MW of 42.9 kDa. The protein migrates as 64 kDa under reducing (R) condition (SDS-PAGE) due to glycosylation.
Purity:	>95 % as determined by SDS-PAGE.
Endotoxin Level:	Less than 1.0 EU per µg by the LAL method.

Target Details

Target:	LAIR1
Alternative Name:	LAIR-1 (LAIR1 Products)
Background:	Leukocyte-associated immunoglobulin-like receptor-1 (LAIR-1) is constitutively expressed on the majority of human peripheral blood mononuclear leukocytes. LAIR-1 or CD305 is a

Target Details

transmembrane glycoprotein with a single immunoglobulin-like domain and a cytoplasmic tail containing two immune receptor tyrosine-based inhibitory motifs. LAIR-1 recruits SHP-1 and SHP-2 phosphatases upon activation, and cross-linking of the LAIR-1 antigen on natural killer (NK) cells results in strong inhibition of NK cell-mediated cytotoxicity. Functions as an inhibitory receptor that plays a constitutive negative regulatory role on cytolytic function of natural killer (NK) cells, B-cells and T-cells. Activation by Tyr phosphorylation results in recruitment and activation of the phosphatases PTPN6 and PTPN11. It also reduces the increase of intracellular calcium evoked by B-cell receptor ligation. Diseases associated with LAIR1 include Chronic Active Epstein-Barr Virus Infection and Palindromic Rheumatism.

Molecular Weight: 42.9 kDa

Application Details

Restrictions: For Research Use only

Handling

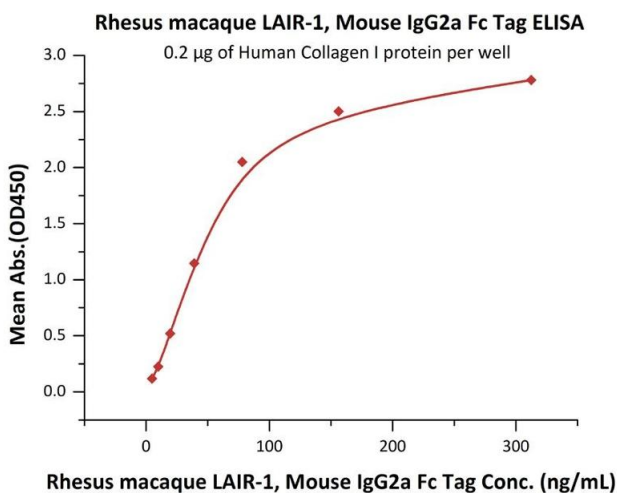
Format: Lyophilized

Buffer: Tris with Glycine, Arginine and NaCl, pH 7.5

Handling Advice: Please avoid repeated freeze-thaw cycles.

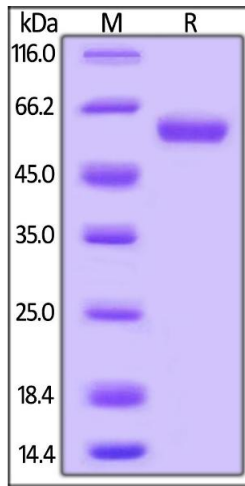
Storage: -20 °C

Images



ELISA

Image 1. Immobilized Human Collagen I protein at 2 µg/mL (100 µL/well) can bind Rhesus macaque LAIR-1, Mouse IgG2a Fc Tag (ABIN5674654, ABIN6809983) with a linear range of 5-78 ng/mL (QC tested).



SDS-PAGE

Image 2. Rhesus macaque LAIR-1, Mouse IgG2a Fc Tag on under reducing (R) condition. The gel was stained overnight with Coomassie Blue. The purity of the protein is greater than 95 % .