



[Go to Product page](#)

Datasheet for ABIN5675045
anti-Involucrin antibody (AA 21-120)

1 Image

Overview

Quantity:	100 µL
Target:	Involucrin (IVL)
Binding Specificity:	AA 21-120
Reactivity:	Human
Host:	Rabbit
Clonality:	Polyclonal
Conjugate:	This Involucrin antibody is un-conjugated
Application:	Western Blotting (WB), ELISA

Product Details

Immunogen:	KLH conjugated synthetic peptide derived from mouse Involucrin
Isotype:	IgG
Cross-Reactivity:	Human
Predicted Reactivity:	Mouse,Rat
Purification:	Purified by Protein A.

Target Details

Target:	Involucrin (IVL)
Alternative Name:	Involucrin (IVL Products)
Background:	Synonyms: Involucrin, IVL

Target Details

Background: Part of the insoluble cornified cell envelope (CE) of stratified squamous epithelia.

UniProt: [P48997](#)

Application Details

Application Notes: WB 1:300-5000
ELISA 1:500-1000

Restrictions: For Research Use only

Handling

Format: Liquid

Concentration: 1 µg/µL

Buffer: 0.01M TBS(pH 7.4) with 1 % BSA, 0.02 % Proclin300 and 50 % Glycerol.

Preservative: ProClin

Precaution of Use: This product contains ProClin: a POISONOUS AND HAZARDOUS SUBSTANCE, which should be handled by trained staff only.

Storage: 4 °C,-20 °C

Storage Comment: Shipped at 4°C. Store at -20°C for one year. Avoid repeated freeze/thaw cycles.

Expiry Date: 12 months

Images

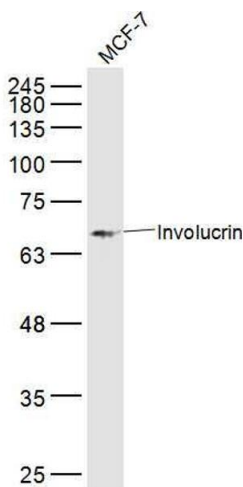


Image 1. MCF7 lysates probed with Involucrin Polyclonal Antibody, Unconjugated at 1:300 dilution and 4°C overnight incubation. Followed by conjugated secondary antibody incubation at 1:10000 for 60 min at 37°C.