

Datasheet for ABIN5675106
anti-SLC23A3 antibody (AA 201-300)[Go to Product page](#)

1 Image

Overview

Quantity:	100 µL
Target:	SLC23A3
Binding Specificity:	AA 201-300
Reactivity:	Mouse
Host:	Rabbit
Clonality:	Polyclonal
Conjugate:	This SLC23A3 antibody is un-conjugated
Application:	Western Blotting (WB), ELISA, Immunofluorescence (Paraffin-embedded Sections) (IF (p)), Immunofluorescence (Cultured Cells) (IF (cc)), Immunohistochemistry (Frozen Sections) (IHC (fro)), Immunohistochemistry (Paraffin-embedded Sections) (IHC (p)), Immunocytochemistry (ICC)

Product Details

Immunogen:	KLH conjugated synthetic peptide derived from mouse SLC23A3
Isotype:	IgG
Cross-Reactivity:	Mouse
Purification:	Purified by Protein A.

Target Details

Target:	SLC23A3
Alternative Name:	SLC23A3 (SLC23A3 Products)

Target Details

Background:	<p>Synonyms: Solute carrier family 23 member 3, SLC23A3, Solute carrier family 23 member 3, HPC E2-binding protein 3, Na(+)/L-ascorbic acid transporter 3, Sodium-dependent vitamin C transporter 3, SLC23A3, E2BP3, SVCT3</p> <p>Background: SLC23A3 (Solute Carrier Family 23, Member 3) is a Protein Coding gene. Diseases associated with SLC23A3 include epilepsy, generalized, with febrile seizures plus, type 5. GO annotations related to this gene include transporter activity. An important paralog of this gene is SLC23A1.</p>
Gene ID:	151295
UniProt:	Q6PIS1

Application Details

Application Notes:	<p>WB 1:300-5000</p> <p>ELISA 1:500-1000</p> <p>IHC-P 1:200-400</p> <p>IHC-F 1:100-500</p> <p>IF(IHC-P) 1:50-200</p> <p>IF(IHC-F) 1:50-200</p> <p>IF(ICC) 1:50-200</p> <p>ICC 1:100-500</p>
Restrictions:	For Research Use only

Handling

Format:	Liquid
Concentration:	1 µg/µL
Buffer:	0.01M TBS(pH 7.4) with 1 % BSA, 0.02 % Proclin300 and 50 % Glycerol.
Preservative:	ProClin
Precaution of Use:	This product contains ProClin: a POISONOUS AND HAZARDOUS SUBSTANCE, which should be handled by trained staff only.
Storage:	4 °C,-20 °C
Storage Comment:	Shipped at 4°C. Store at -20°C for one year. Avoid repeated freeze/thaw cycles.
Expiry Date:	12 months

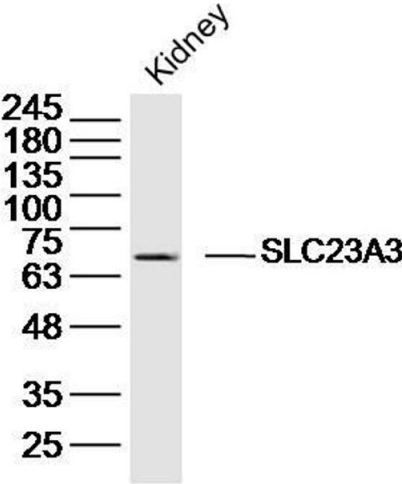


Image 1. Mouse kidney lysates probed with SLC23A3 Polyclonal Antibody, Unconjugated at 1:300 dilution and 4°C overnight incubation. Followed by conjugated secondary antibody incubation at 1:10000 for 60 min at 37°C.