

Datasheet for ABIN5675109
anti-SLC25A38 antibody (AA 101-200)[Go to Product page](#)

2 Images

Overview

Quantity:	100 µL
Target:	SLC25A38
Binding Specificity:	AA 101-200
Reactivity:	Mouse, Rat
Host:	Rabbit
Clonality:	Polyclonal
Conjugate:	This SLC25A38 antibody is un-conjugated
Application:	ELISA, Western Blotting (WB), Immunofluorescence (Cultured Cells) (IF (cc)), Immunofluorescence (Paraffin-embedded Sections) (IF (p)), Immunohistochemistry (Paraffin- embedded Sections) (IHC (p)), Immunohistochemistry (Frozen Sections) (IHC (fro)), Immunocytochemistry (ICC)

Product Details

Immunogen:	KLH conjugated synthetic peptide derived from human SLC25A38
Isotype:	IgG
Cross-Reactivity:	Mouse, Rat
Predicted Reactivity:	Human,Cow,Sheep,Rabbit
Purification:	Purified by Protein A.

Target Details

Target:	SLC25A38
---------	----------

Target Details

Alternative Name:	SLC25A38 (SLC25A38 Products)
Background:	<p>Synonyms: Solute carrier family 25 member 38, SLC25A38</p> <p>Background: Mitochondrial carrier required during erythropoiesis. Probably involved in the biosynthesis of heme, possibly by facilitating 5-aminolevulinate (ALA) production. May act by importing glycine into mitochondria or by exchanging glycine for ALA across the mitochondrial inner membrane.</p>
Gene ID:	54977
UniProt:	Q96DW6

Application Details

Application Notes:	<p>WB 1:300-5000</p> <p>ELISA 1:500-1000</p> <p>IHC-P 1:200-400</p> <p>IHC-F 1:100-500</p> <p>IF(IHC-P) 1:50-200</p> <p>IF(IHC-F) 1:50-200</p> <p>IF(ICC) 1:50-200</p> <p>ICC 1:100-500</p>
Restrictions:	For Research Use only

Handling

Format:	Liquid
Concentration:	1 µg/µL
Buffer:	0.01M TBS(pH 7.4) with 1 % BSA, 0.02 % Proclin300 and 50 % Glycerol.
Preservative:	ProClin
Precaution of Use:	This product contains ProClin: a POISONOUS AND HAZARDOUS SUBSTANCE, which should be handled by trained staff only.
Storage:	4 °C,-20 °C
Storage Comment:	Shipped at 4°C. Store at -20°C for one year. Avoid repeated freeze/thaw cycles.
Expiry Date:	12 months

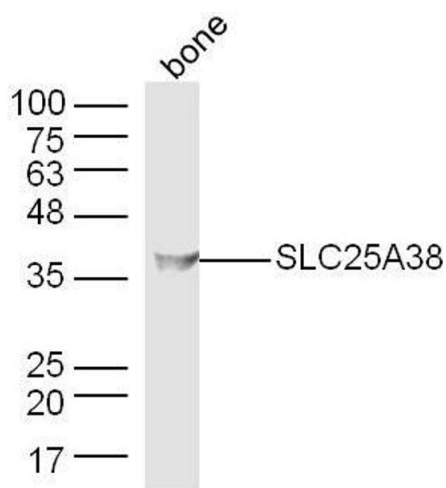
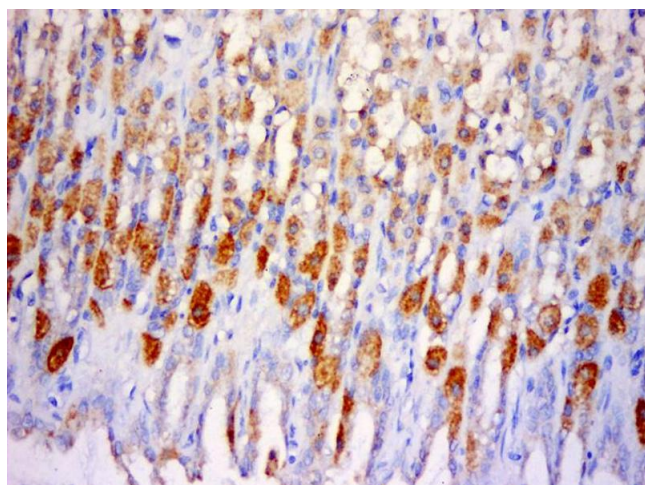


Image 1. Mouse bone lysates probed with SLC25A38 Polyclonal Antibody, Unconjugated at 1:300 dilution and 4°C overnight incubation. Followed by conjugated secondary antibody incubation at 1:10000 for 60 min at 37°C.



Immunohistochemistry (Paraffin-embedded Sections)

Image 2. Paraformaldehyde-fixed, paraffin embedded Rat stomach Antigen retrieval by boiling in sodium citrate buffer (pH6.0) for 15min Block endogenous peroxidase by 3% hydrogen peroxide for 20 minutes Blocking buffer (normal goat serum) at 37°C for 30min Antibody incubation with SLC25A38 Polyclonal Antibody, Unconjugated at 1:500 overnight at 4°C, DAB staining.