

Datasheet for ABIN5675139
anti-WASF3 antibody (AA 21-120)[Go to Product page](#)

1 Image

Overview

Quantity:	100 µL
Target:	WASF3
Binding Specificity:	AA 21-120
Reactivity:	Mouse, Rat
Host:	Rabbit
Clonality:	Polyclonal
Conjugate:	This WASF3 antibody is un-conjugated
Application:	Western Blotting (WB), ELISA, Flow Cytometry (FACS), Immunofluorescence (Cultured Cells) (IF (cc)), Immunofluorescence (Paraffin-embedded Sections) (IF (p)), Immunohistochemistry (Paraffin-embedded Sections) (IHC (p)), Immunocytochemistry (ICC), Immunohistochemistry (Frozen Sections) (IHC (fro))

Product Details

Immunogen:	KLH conjugated synthetic peptide derived from human WASF3
Isotype:	IgG
Cross-Reactivity:	Mouse, Rat
Predicted Reactivity:	Human,Dog,Cow,Sheep,Horse,Chicken,Rabbit
Purification:	Purified by Protein A.

Target Details

Target:	WASF3
---------	-------

Target Details

Alternative Name:	WASF3 (WASF3 Products)
Background:	<p>Synonyms: KIAA0900, Protein WAVE-3, Protein WAVE3, SCAR3, Verprolin homology domain containing protein 3, Verprolin homology domain-containing protein 3, WASF3, WASF3_HUMAN, WASP family protein member 3, WAVE3, Wiskott Aldrich syndrome protein family member 3, Wiskott-Aldrich syndrome protein family member 3.</p> <p>Background: Downstream effector molecules involved in the transmission of signals from tyrosine kinase receptors and small GTPases to the actin cytoskeleton. Plays a role in the regulation of cell morphology and cytoskeletal organization. Required in the control of cell shape.</p>
Gene ID:	10810
UniProt:	Q9UPY6
Pathways:	RTK Signaling

Application Details

Application Notes:	WB 1:300-5000 ELISA 1:500-1000 FCM 1:20-100 IHC-P 1:200-400 IHC-F 1:100-500 IF(IHC-P) 1:50-200 IF(IHC-F) 1:50-200 IF(ICC) 1:50-200 ICC 1:100-500
Restrictions:	For Research Use only

Handling

Format:	Liquid
Concentration:	1 µg/µL
Buffer:	0.01M TBS(pH 7.4) with 1 % BSA, 0.02 % Proclin300 and 50 % Glycerol.
Preservative:	ProClin
Precaution of Use:	This product contains ProClin: a POISONOUS AND HAZARDOUS SUBSTANCE, which should be handled by trained staff only.

Handling

Storage:	4 °C,-20 °C
Storage Comment:	Shipped at 4°C. Store at -20°C for one year. Avoid repeated freeze/thaw cycles.
Expiry Date:	12 months

Images

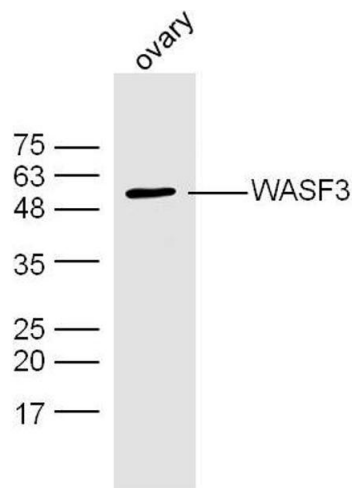


Image 1. Mouse ovarian lysates probed with WASF3 Polyclonal Antibody, Unconjugated at 1:300 dilution and 4°C overnight incubation. Followed by conjugated secondary antibody incubation at 1:10000 for 60 min at 37°C.