

Datasheet for ABIN5675211
anti-PMM1 antibody (AA 31-130)[Go to Product page](#)

1 Image

Overview

Quantity:	100 µL
Target:	PMM1
Binding Specificity:	AA 31-130
Reactivity:	Human
Host:	Rabbit
Clonality:	Polyclonal
Conjugate:	This PMM1 antibody is un-conjugated
Application:	ELISA, Western Blotting (WB)

Product Details

Immunogen:	KLH conjugated synthetic peptide derived from human PMM1
Isotype:	IgG
Cross-Reactivity:	Human
Predicted Reactivity:	Mouse,Rat,Dog,Cow,Sheep,Pig,Horse,Rabbit
Purification:	Purified by Protein A.

Target Details

Target:	PMM1
Alternative Name:	PMM1 (PMM1 Products)
Background:	Synonyms: Phosphomannomutase 1, PMM1, PMM 1, PMMH-22, PMMH22

Target Details

Background: Involved in the synthesis of the GDP-mannose and dolichol-phosphate-mannose required for a number of critical mannosyl transfer reactions. In addition, may be responsible for the degradation of glucose-1,6-bisphosphate in ischemic brain.

Gene ID: 5372

UniProt: [Q92871](#)

Application Details

Application Notes: WB 1:300-5000
ELISA 1:500-1000

Restrictions: For Research Use only

Handling

Format: Liquid

Concentration: 1 µg/µL

Buffer: 0.01M TBS(pH 7.4) with 1 % BSA, 0.02 % Proclin300 and 50 % Glycerol.

Preservative: ProClin

Precaution of Use: This product contains ProClin: a POISONOUS AND HAZARDOUS SUBSTANCE, which should be handled by trained staff only.

Storage: 4 °C,-20 °C

Storage Comment: Shipped at 4°C. Store at -20°C for one year. Avoid repeated freeze/thaw cycles.

Expiry Date: 12 months

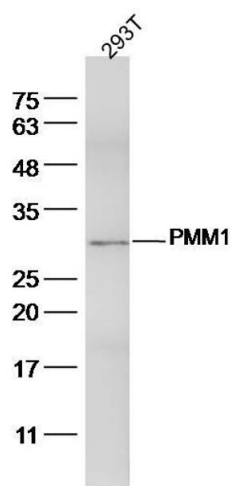


Image 1. 293T lysates probed with PMM1 Polyclonal Antibody, Unconjugated at 1:300 dilution and 4°C overnight incubation. Followed by conjugated secondary antibody incubation at 1:10000 for 60 min at 37°C.