

Datasheet for ABIN5675258  
**anti-AP3B1 antibody (AA 1-100)**[Go to Product page](#)

## 1 Image

## Overview

|                      |  |
|----------------------|--|
| Quantity:            | 100 µL   |
| Target:              | AP3B1  |
| Binding Specificity: | AA 1-100   |
| Reactivity:          | Human, Mouse, Xenopus laevis   |
| Host:                | Rabbit   |
| Clonality:           | Polyclonal   |
| Conjugate:           | This AP3B1 antibody is un-conjugated   |
| Application:         | Western Blotting (WB), ELISA, Immunofluorescence (Cultured Cells) (IF (cc)),<br>Immunofluorescence (Paraffin-embedded Sections) (IF (p)), Immunohistochemistry (Frozen<br>Sections) (IHC (fro)), Immunohistochemistry (Paraffin-embedded Sections) (IHC (p)),<br>Immunocytochemistry (ICC) |

## Product Details

|                       |  |
|-----------------------|--|
| Immunogen:            | KLH conjugated synthetic peptide derived from human HPS2 |
| Isotype:              | IgG  |
| Cross-Reactivity:     | Human, Mouse, Xenopus laevis                             |
| Predicted Reactivity: | Rat,Dog,Cow,Sheep,Pig,Horse,Cat                          |
| Purification:         | Purified by Protein A.                                   |

## Target Details

|         |       |
|---------|-------|
| Target: | AP3B1 |
|---------|-------|

## Target Details

|                   |  |
|-------------------|--|
| Alternative Name: | HPS2 ( <a href="#">AP3B1 Products</a> )  |
| Background:       | <p>Synonyms: AP-3 complex subunit beta-1, AP3B1, Adaptor protein complex AP-3 subunit beta-1, Adaptor-related protein complex 3 subunit beta-1, Beta-3A-adaptin, Clathrin assembly protein complex 3 beta-1 large chain, AP3B1, ADTB3A</p> <p>Background: Subunit of non-clathrin- and clathrin-associated adaptor protein complex 3 that plays a role in protein sorting in the late-Golgi/trans-Golgi network (TGN) and/or endosomes. The AP complexes mediate both the recruitment of clathrin to membranes and the recognition of sorting signals within the cytosolic tails of transmembrane cargo molecules. AP-3 appears to be involved in the sorting of a subset of transmembrane proteins targeted to lysosomes and lysosome-related organelles.</p> |
| Gene ID:          | 8546   |
| UniProt:          | <a href="#">O00203</a>   |
| Pathways:         | <a href="#">SARS-CoV-2 Protein Interactome</a>   |

## Application Details

|                    |  |
|--------------------|--|
| Application Notes: | WB 1:300-5000<br>ELISA 1:500-1000<br>IHC-P 1:200-400<br>IHC-F 1:100-500<br>IF(IHC-P) 1:50-200<br>IF(IHC-F) 1:50-200<br>IF(ICC) 1:50-200<br>ICC 1:100-500 |
| Restrictions:      | For Research Use only  |

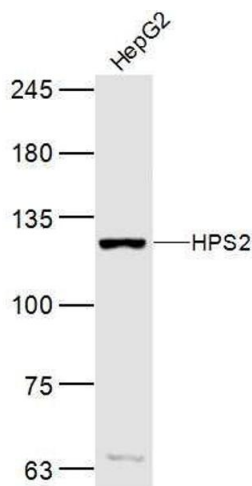
## Handling

|                    |  |
|--------------------|--|
| Format:            | Liquid   |
| Concentration:     | 1 µg/µL  |
| Buffer:            | 0.01M TBS( pH 7.4) with 1 % BSA, 0.02 % Proclin300 and 50 % Glycerol.  |
| Preservative:      | ProClin  |
| Precaution of Use: | This product contains ProClin: a POISONOUS AND HAZARDOUS SUBSTANCE, which should be handled by trained staff only. |

Handling

|                  |   |
|------------------|---|
| Storage:         | 4 °C,-20 °C   |
| Storage Comment: | Shipped at 4°C. Store at -20°C for one year. Avoid repeated freeze/thaw cycles. |
| Expiry Date:     | 12 months   |

Images



Western Blotting

**Image 1.** Hepg2 lysates probed with HPS2 Polyclonal Antibody, Unconjugated at 1:300 dilution and 4°C overnight incubation. Followed by conjugated secondary antibody incubation at 1:10000 for 60 min at 37°C.