



[Go to Product page](#)

Datasheet for ABIN5675277
anti-CYP3A1 antibody (AA 231-330)

2 Images

Overview

Quantity:	100 µL
Target:	CYP3A1 (Cyp3a1)
Binding Specificity:	AA 231-330
Reactivity:	Rat
Host:	Rabbit
Clonality:	Polyclonal
Conjugate:	This CYP3A1 antibody is un-conjugated
Application:	Western Blotting (WB), Immunofluorescence (Cultured Cells) (IF (cc)), Immunofluorescence (Paraffin-embedded Sections) (IF (p)), ELISA, Immunohistochemistry (Frozen Sections) (IHC (fro)), Immunohistochemistry (Paraffin-embedded Sections) (IHC (p)), Immunocytochemistry (ICC)

Product Details

Immunogen:	KLH conjugated synthetic peptide derived from rat CYP3A1
Isotype:	IgG
Cross-Reactivity:	Rat
Purification:	Purified by Protein A.

Target Details

Target:	CYP3A1 (Cyp3a1)
Alternative Name:	CYP3A1 (Cyp3a1 Products)

Target Details

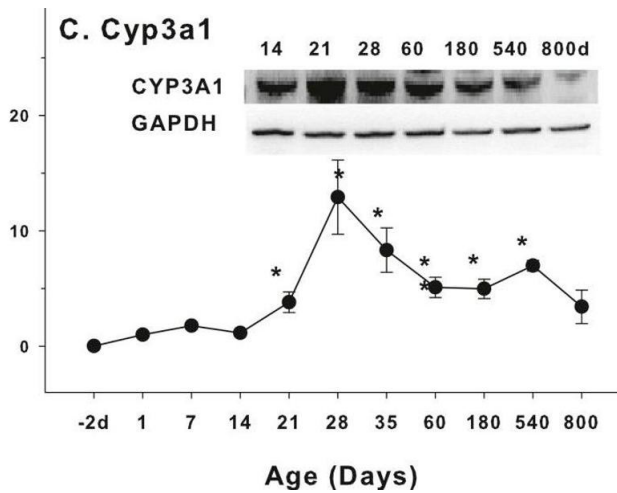
Background:	Synonyms: Cytochrome P450 3A1, Cyp3a1, CYP11A1, Cytochrome P450-PCN1, Cyp3a1, Cyp3a-1 Background: Cytochromes P450 are a group of heme-thiolate monooxygenases. In liver microsomes, this enzyme is involved in an NADPH-dependent electron transport pathway. It oxidizes a variety of structurally unrelated compounds, including steroids, fatty acids, and xenobiotics.
UniProt:	P04800

Application Details

Application Notes:	WB 1:300-5000 ELISA 1:500-1000 IHC-P 1:200-400 IHC-F 1:100-500 IF(IHC-P) 1:50-200 IF(IHC-F) 1:50-200 IF(ICC) 1:50-200 ICC 1:100-500
Restrictions:	For Research Use only

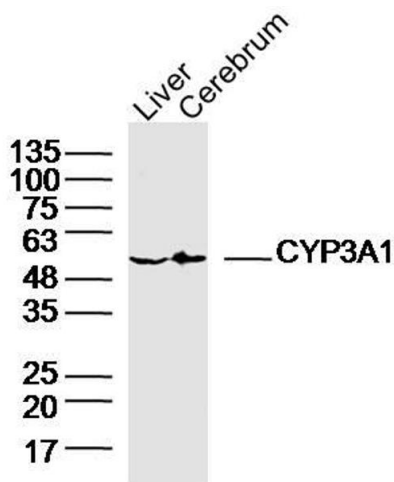
Handling

Format:	Liquid
Concentration:	1 µg/µL
Buffer:	0.01M TBS(pH 7.4) with 1 % BSA, 0.02 % Proclin300 and 50 % Glycerol.
Preservative:	ProClin
Precaution of Use:	This product contains ProClin: a POISONOUS AND HAZARDOUS SUBSTANCE, which should be handled by trained staff only.
Storage:	4 °C,-20 °C
Storage Comment:	Shipped at 4°C. Store at -20°C for one year. Avoid repeated freeze/thaw cycles.
Expiry Date:	12 months



Western Blotting

Image 1. Age-related expression of CYP-3 family gene/proteins in livers of male rats. (A) PXR, (B) Cyp3a2, (C) Cyp3a1. Livers from male SD rats at the fetus (-2 d before birth), the neonatal stage (1, 7, and 14 d), and at weanling (21 d), at puberty (28 and 35 d), at adult (60 and 180 d), and at aging (540 and 800 d), were collected to extract RNA, followed by qPCR analysis (n = 4-5 for each time point). *Significantly different from at birth, p < 0.05. For western blot insert, the neonatal (14 d), at weanling (21 d), at puberty (28 d), at adult (60 and 180 d), and at aging (540 and 800 d) were collected to extract protein. Aliquoted proteins (30 µg) were separated on NUPAGE 10 % BT gels and the representative western blot was inserted into the figure (n = 3). The molecular weight for CYP3A1 was 57 kD, and β-actin 43 kD. - figure provided by CiteAb. Source: PMID31396457



Western Blotting

Image 2. Lane 1: Rat Liver lysates Lane 2: Rat Cerebrum lysates probed with CYP3A1 Polyclonal Antibody, Unconjugated at 1:300 dilution and 4°C overnight incubation. Followed by conjugated secondary antibody incubation at 1:10000 for 60 min at 37°C.